



[Go to Product page](#)

Datasheet for ABIN1321393

SSBP3 Protein (AA 1-102) (GST tag)

1 Image

Overview

Quantity:	10 µg
Target:	SSBP3
Protein Characteristics:	AA 1-102
Origin:	Human
Source:	Wheat germ
Protein Type:	Recombinant
Purification tag / Conjugate:	This SSBP3 protein is labelled with GST tag.
Application:	ELISA, Western Blotting (WB), Affinity Purification (AP), Antibody Array (AA)

Product Details

Purpose:	SSBP3 (Human) Recombinant Protein (Q01)
Sequence:	MFAKKGKSAV PSDGQAREKL ALYVYEYLLH VQAQKSAQTF LSEIRWEKNI TLGEPPGFLH SWWCVFWDLY CAAPERDTC EHSSEAKAFH DYSAAAAPSP VL
Characteristics:	Human SSBP3 partial ORF (NP_060540, 1 a.a. - 102 a.a.) recombinant protein with GST-tag at N-terminal.
Purification:	in vitro wheat germ expression system

Target Details

Target:	SSBP3
Alternative Name:	SSBP3 (SSBP3 Products)

Target Details

Background:	Full Gene Name: single stranded DNA binding protein 3 Synonyms: CSDP,FLJ10355,SSDP,SSDP1
Gene ID:	23648
NCBI Accession:	NM_018070

Application Details

Application Notes:	Optimal working dilution should be determined by the investigator.
Comment:	Preparation method: in vitro, wheat germ expression system Product Quality tested by: 12.5% SDS-PAGE Stained with Coomassie Blue.
Restrictions:	For Research Use only

Handling

Buffer:	50 mM Tris-HCl, 10 mM reduced Glutathione, pH =8.0 in the elution buffer.
Handling Advice:	Aliquot to avoid repeated freezing and thawing.
Storage:	-80 °C
Storage Comment:	Best use within three months from the date of receipt of this protein.

Images

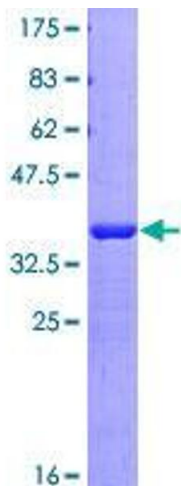


Image 1.