



Datasheet for ABIN1321424

## SSR4 Protein (AA 24-173) (GST tag)



[Go to Product page](#)

### 1 Image

#### Overview

Quantity:	10 µg
Target:	SSR4
Protein Characteristics:	AA 24-173
Origin:	Human
Source:	Wheat germ
Protein Type:	Recombinant
Purification tag / Conjugate:	This SSR4 protein is labelled with GST tag.
Application:	Western Blotting (WB), ELISA, Affinity Purification (AP), Antibody Array (AA)

#### Product Details

Purpose:	SSR4 (Human) Recombinant Protein (P01)
Sequence:	EACLEPQITP SYTTSDAVI STETVLIVEI SLTCKNRVQN MALYADVGGK QFPVTRGQDV GRYQVSWSLD HKSAHAGTYE VRRFDEESYS LLRKAQRNNE DISIIPPLFT VSVDHRGTWN GPWVSTEVLA AAIGLVIYYL AFSAKSHIQA
Characteristics:	Human SSR4 full-length ORF ( AAH03371, 24 a.a. - 173 a.a.) recombinant protein with GST-tag at N-terminal.
Purification:	in vitro wheat germ expression system

#### Target Details

Target:	SSR4
Alternative Name:	SSR4 ( <a href="#">SSR4 Products</a> )

## Target Details

Background:	Full Gene Name: signal sequence receptor, delta (translocon-associated protein delta) Synonyms: TRAPD
Gene ID:	6748

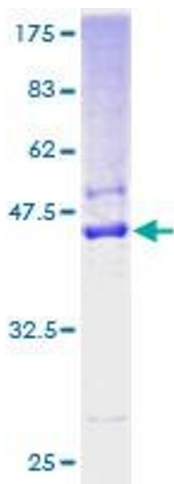
## Application Details

Application Notes:	Optimal working dilution should be determined by the investigator.
Comment:	Preparation method: in vitro, wheat germ expression system Product Quality tested by: 12.5% SDS-PAGE Stained with Coomassie Blue.
Restrictions:	For Research Use only

## Handling

Buffer:	50 mM Tris-HCl, 10 mM reduced Glutathione, pH =8.0 in the elution buffer.
Handling Advice:	Aliquot to avoid repeated freezing and thawing.
Storage:	-80 °C
Storage Comment:	Best use within three months from the date of receipt of this protein.

## Images



**Image 1.**