

Datasheet for ABIN1321434
SSTR1 Protein (AA 1-391) (GST tag)



[Go to Product page](#)

1 Image

Overview

Quantity:	10 µg
Target:	SSTR1
Protein Characteristics:	AA 1-391
Origin:	Human
Source:	Wheat germ
Protein Type:	Recombinant
Purification tag / Conjugate:	This SSTR1 protein is labelled with GST tag.
Application:	ELISA, Western Blotting (WB), Affinity Purification (AP), Antibody Array (AA)

Product Details

Purpose:	SSTR1 (Human) Recombinant Protein (P01)
Sequence:	MFPNGTASSP SSSPSPSPGS CGEGGSRGP GAGAADMEE PGRNASQNGT LSEGQGSAIL ISFIYSVVCL VGLCGNSMVI YVILRYAKMK TATNIYILNL AIADELLMLS VPFLVTSTLL RHWPFGALLC RLVLSVDAVN MFTSIYCLTV LSVDRYVAVV HPIKAARYRR PTVAKVVNLG VWVLSLLVIL PIVVFSRTAA NSDGTVACNM LMPEPAQRWL VGFVLYTFLM GFLLPVGAIC LCYVLLIAKM RMVALKAGWQ QRKRSEKIT LMVMMVVMVF VICWMPFYVV QLVNVFAEQD DATVSQLSVI LGYANSCANP ILYGFLSDNF KRSFQRILCL SWMDNAAEEP VDYYATALKS RAYSVEDFQP ENLESGGVFR NGTCTSRITT L
Characteristics:	Human SSTR1 full-length ORF (NP_001040.1, 1 a.a. - 391 a.a.) recombinant protein with GST-tag at N-terminal.
Purification:	in vitro wheat germ expression system

Target Details

Target:	SSTR1
Alternative Name:	SSTR1 (SSTR1 Products)
Background:	Full Gene Name: somatostatin receptor 1 Synonyms: SRIF-2
Gene ID:	6751
NCBI Accession:	NM_001049

Application Details

Application Notes:	Optimal working dilution should be determined by the investigator.
Comment:	Preparation method: in vitro, wheat germ expression system Product Quality tested by: 12.5% SDS-PAGE Stained with Coomassie Blue.
Restrictions:	For Research Use only

Handling

Buffer:	50 mM Tris-HCl, 10 mM reduced Glutathione, pH =8.0 in the elution buffer.
Handling Advice:	Aliquot to avoid repeated freezing and thawing.
Storage:	-80 °C
Storage Comment:	Best use within three months from the date of receipt of this protein.

Images

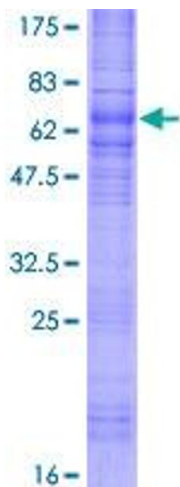


Image 1.