



[Go to Product page](#)

Datasheet for ABIN1321452

## SSX2 Protein (AA 1-223) (GST tag)

1 Image

1 Publication

### Overview

Quantity:	10 µg
Target:	SSX2
Protein Characteristics:	AA 1-223
Origin:	Human
Source:	Wheat germ
Protein Type:	Recombinant
Purification tag / Conjugate:	This SSX2 protein is labelled with GST tag.
Application:	Affinity Purification (AP), Antibody Array (AA), ELISA, Western Blotting (WB)

### Product Details

Purpose:	SSX2 (Human) Recombinant Protein (P01)
Sequence:	MNGDDAFARR PTVGAQIPEK IQKAFDDIAK YFSKEEWEKM KASEKIFYVY MKRKYEAMTK LGFKATLPPF MCNKRAEDFQ GNDLDNDPNR GNQVERPQMT FGRLQGISP KIMPCKPAEEG NDSEEVPEAS GPQNDGKELC PPGKPTTSEK IHERSGNREA QEKEERRGTA HRWSSQNTHN IGRFSLSLSTSM GAVHGTPKTI THNRDPKGGN MPGPTDCVRE NSW
Characteristics:	Human SSX2 full-length ORF ( AAH02818, 1 a.a. - 223 a.a.) recombinant protein with GST-tag at N-terminal.
Purification:	in vitro wheat germ expression system

### Target Details

Target:	SSX2
---------	------

## Target Details

---

Alternative Name:	SSX2 ( <a href="#">SSX2 Products</a> )
Background:	Full Gene Name: synovial sarcoma, X breakpoint 2 Synonyms: HD21,HOM-MEL-40,MGC119055,MGC15364,MGC3884,SSX
Gene ID:	6757

## Application Details

---

Application Notes:	Optimal working dilution should be determined by the investigator.
Comment:	Preparation method: in vitro, wheat germ expression system Product Quality tested by: 12.5% SDS-PAGE Stained with Coomassie Blue.
Restrictions:	For Research Use only

## Handling

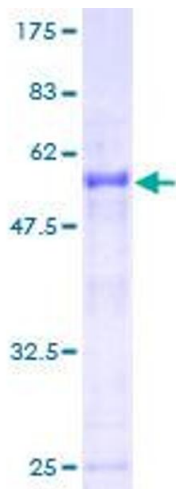
---

Buffer:	50 mM Tris-HCl, 10 mM reduced Glutathione, pH =8.0 in the elution buffer.
Handling Advice:	Aliquot to avoid repeated freezing and thawing.
Storage:	-80 °C
Storage Comment:	Best use within three months from the date of receipt of this protein.

## Publications

---

Product cited in:	Smith, Cronk, Lang, McNeel: "Expression and immunotherapeutic targeting of the SSX family of cancer-testis antigens in prostate cancer." in: <b>Cancer research</b> , Vol. 71, Issue 21, pp. 6785-95, (2011) ( <a href="#">PubMed</a> ).
-------------------	--



### SDS-PAGE

Image 1.