

Datasheet for ABIN1321462
SSX4 Protein (AA 91-188) (GST tag)



[Go to Product page](#)

1 Image

Overview

Quantity:	10 µg
Target:	SSX4
Protein Characteristics:	AA 91-188
Origin:	Human
Source:	Wheat germ
Protein Type:	Recombinant
Purification tag / Conjugate:	This SSX4 protein is labelled with GST tag.
Application:	ELISA, Western Blotting (WB), Affinity Purification (AP), Antibody Array (AA)

Product Details

Purpose:	SSX4 (Human) Recombinant Protein (Q01)
Sequence:	RNQVERPQMT FGSLQRIFPK IMPKKPAEEE NGLKEVPEAS GPQNDGKQLC PPGNPSTLEK INKTSGPKRG KHAWTHRLRE RKQLVYEEI SDPEEDDE
Characteristics:	Human SSX4 partial ORF (NP_005627, 91 a.a. - 188 a.a.) recombinant protein with GST-tag at N-terminal.
Purification:	in vitro wheat germ expression system

Target Details

Target:	SSX4
Alternative Name:	SSX4 (SSX4 Products)

Target Details

Background:	Full Gene Name: synovial sarcoma, X breakpoint 4 Synonyms: MGC119056,MGC12411
Gene ID:	6759
NCBI Accession:	NM_005636

Application Details

Application Notes:	Optimal working dilution should be determined by the investigator.
Comment:	Preparation method: in vitro, wheat germ expression system Product Quality tested by: 12.5% SDS-PAGE Stained with Coomassie Blue.
Restrictions:	For Research Use only

Handling

Buffer:	50 mM Tris-HCl, 10 mM reduced Glutathione, pH =8.0 in the elution buffer.
Handling Advice:	Aliquot to avoid repeated freezing and thawing.
Storage:	-80 °C
Storage Comment:	Best use within three months from the date of receipt of this protein.

Images

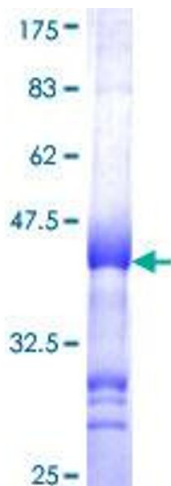


Image 1.