



[Go to Product page](#)

Datasheet for ABIN1321482

ST3GAL2 Protein (AA 1-350) (GST tag)

1 Image

Overview

Quantity:	25 µg
Target:	ST3GAL2
Protein Characteristics:	AA 1-350
Origin:	Human
Source:	Wheat germ
Protein Type:	Recombinant
Purification tag / Conjugate:	This ST3GAL2 protein is labelled with GST tag.
Application:	ELISA, Western Blotting (WB), Affinity Purification (AP), Antibody Array (AA)

Product Details

Purpose:	ST3GAL2 (Human) Recombinant Protein (P01)
Sequence:	MKCSLRVWFL SVAFLLVFIM SLLFTYSHHS MATLPYLDSG ALDGTHRVLK VPGYAGLQRL SKERLSGKSC ACRRCMGDAG ASDWFDSHFD GNISPVWTRE NMDLPPDVQR WWMMLQPQFK SHNTNEVLEK LQIVPGENP YRFRDPHQCR RCAVVGNSGN LRGSGYGQDV DGHNFIMRMN QAPTVGFEQD VGSRTTHHFM YPESAKNLPA NVSFVLVPEK VLDLLWIASA LSTGQIRFTY APVKSFLRVD KEKVQIYNPA FFKYIHDRWT EHHGRYPSTG MLVLFALHV CDEVNVYGF ADSRGNWHHY WENNRVAGEF RKTGVHDADF EAHIDMLAK ASKIEVYRGN
Characteristics:	Human ST3GAL2 full-length ORF (AAH36777, 1 a.a. - 350 a.a.) recombinant protein with GST-tag at N-terminal.
Purification:	in vitro wheat germ expression system

Target Details

Target:	ST3GAL2
Alternative Name:	ST3GAL2 (ST3GAL2 Products)
Background:	Full Gene Name: ST3 beta-galactoside alpha-2,3-sialyltransferase 2 Synonyms: Gal-NAc6S,SIAT4B,ST3GALII,ST3GalA.2
Gene ID:	6483
Pathways:	Glycosaminoglycan Metabolic Process

Application Details

Application Notes:	Optimal working dilution should be determined by the investigator.
Comment:	Preparation method: in vitro, wheat germ expression system Product Quality tested by: 12.5% SDS-PAGE Stained with Coomassie Blue.
Restrictions:	For Research Use only

Handling

Buffer:	50 mM Tris-HCl, 10 mM reduced Glutathione, pH =8.0 in the elution buffer.
Handling Advice:	Aliquot to avoid repeated freezing and thawing.
Storage:	-80 °C
Storage Comment:	Best use within three months from the date of receipt of this protein.

Images

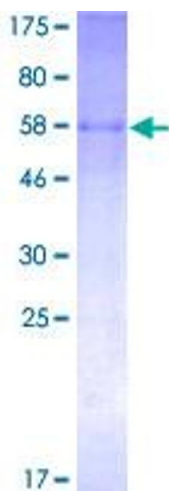


Image 1.