

Datasheet for ABIN1321483
ST3GAL2 Protein (AA 28-127) (GST tag)



[Go to Product page](#)

1 Image

Overview

Quantity:	10 µg
Target:	ST3GAL2
Protein Characteristics:	AA 28-127
Origin:	Human
Source:	Wheat germ
Protein Type:	Recombinant
Purification tag / Conjugate:	This ST3GAL2 protein is labelled with GST tag.
Application:	ELISA, Western Blotting (WB), Affinity Purification (AP), Antibody Array (AA)

Product Details

Purpose:	ST3GAL2 (Human) Recombinant Protein (Q01)
Sequence:	HHSMATLPYL DSGALDGTHR VKLVPGYAGL QRLSKERLSG KSCACRRRCMG DAGASDWFDS HFDGNISPVW TRENMDLPPD VQRWWMLQP QFKSHNTNEV
Characteristics:	Human ST3GAL2 partial ORF (NP_008858, 28 a.a. - 127 a.a.) recombinant protein with GST-tag at N-terminal.
Purification:	in vitro wheat germ expression system

Target Details

Target:	ST3GAL2
Alternative Name:	ST3GAL2 (ST3GAL2 Products)

Target Details

Background:	Full Gene Name: ST3 beta-galactoside alpha-2,3-sialyltransferase 2 Synonyms: Gal-NAc6S,SIAT4B,ST3GALII,ST3GalA.2
Gene ID:	6483
NCBI Accession:	NM_006927
Pathways:	Glycosaminoglycan Metabolic Process

Application Details

Application Notes:	Optimal working dilution should be determined by the investigator.
Comment:	Preparation method: in vitro, wheat germ expression system Product Quality tested by: 12.5% SDS-PAGE Stained with Coomassie Blue.
Restrictions:	For Research Use only

Handling

Buffer:	50 mM Tris-HCl, 10 mM reduced Glutathione, pH =8.0 in the elution buffer.
Handling Advice:	Aliquot to avoid repeated freezing and thawing.
Storage:	-80 °C
Storage Comment:	Best use within three months from the date of receipt of this protein.

Images

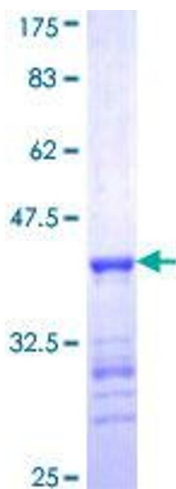


Image 1.