



[Go to Product page](#)

Datasheet for ABIN1321488

## ST3GAL4 Protein (AA 31-130) (GST tag)

### 1 Image

#### Overview

Quantity:	10 µg
Target:	ST3GAL4
Protein Characteristics:	AA 31-130
Origin:	Human
Source:	Wheat germ
Protein Type:	Recombinant
Purification tag / Conjugate:	This ST3GAL4 protein is labelled with GST tag.
Application:	ELISA, Western Blotting (WB), Affinity Purification (AP), Antibody Array (AA)

#### Product Details

Purpose:	ST3GAL4 (Human) Recombinant Protein (Q01)
Sequence:	FYFPIPEKKE PCLQGEAESK ASKLFGNYSR DQIFLRLLED YFWVKTPSAY ELPYGTKGSE DLLLRVLAIT SSSIPKNIQS LRCRRCVVVG NGHRLRNSSL
Characteristics:	Human ST3GAL4 partial ORF ( NP_006269, 31 a.a. - 130 a.a.) recombinant protein with GST-tag at N-terminal.
Purification:	in vitro wheat germ expression system

#### Target Details

Target:	ST3GAL4
Alternative Name:	ST3GAL4 ( <a href="#">ST3GAL4 Products</a> )

## Target Details

---

Background:	Full Gene Name: ST3 beta-galactoside alpha-2,3-sialyltransferase 4 Synonyms: CGS23,FLJ11867,FLJ46764,NANTA3,SAT3,SIAT4,SIAT4C,ST3GalIV,STZ
Gene ID:	6484
NCBI Accession:	<a href="#">NM_006278</a>
Pathways:	<a href="#">Glycosaminoglycan Metabolic Process</a>

## Application Details

---

Application Notes:	Optimal working dilution should be determined by the investigator.
Comment:	Preparation method: in vitro, wheat germ expression system Product Quality tested by: 12.5% SDS-PAGE Stained with Coomassie Blue.
Restrictions:	For Research Use only

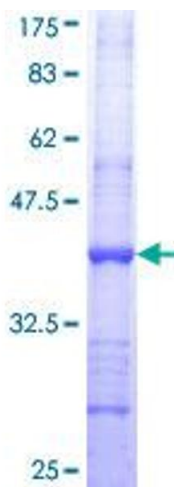
## Handling

---

Buffer:	50 mM Tris-HCl, 10 mM reduced Glutathione, pH =8.0 in the elution buffer.
Handling Advice:	Aliquot to avoid repeated freezing and thawing.
Storage:	-80 °C
Storage Comment:	Best use within three months from the date of receipt of this protein.

## Images

---



**Image 1.**