

Datasheet for ABIN1321494

## ST3GAL6 Protein (AA 145-240) (GST tag)



[Go to Product page](#)

### 1 Image

#### Overview

Quantity:	2 µg
Target:	ST3GAL6
Protein Characteristics:	AA 145-240
Origin:	Human
Source:	Wheat germ
Protein Type:	Recombinant
Purification tag / Conjugate:	This ST3GAL6 protein is labelled with GST tag.
Application:	ELISA, Western Blotting (WB), Affinity Purification (AP), Antibody Array (AA)

#### Product Details

Purpose:	ST3GAL6 (Human) Recombinant Protein (Q01)
Sequence:	MNNGPVLGHE EEVGRRTTFR LFYPESVFSD PIHNDPNTTV ILTAFKPHDL RWLLELLMGD KINTNGFWKK PALNLIYKPY QIRILDPFII RTAAYE
Characteristics:	Human ST3GAL6 partial ORF ( NP_006091, 145 a.a. - 240 a.a.) recombinant protein with GST-tag at N-terminal.
Purification:	in vitro wheat germ expression system

#### Target Details

Target:	ST3GAL6
Alternative Name:	ST3GAL6 ( <a href="#">ST3GAL6 Products</a> )

## Target Details

Background:	Full Gene Name: ST3 beta-galactoside alpha-2,3-sialyltransferase 6 Synonyms: SIAT10,ST3GALVI
Gene ID:	10402
NCBI Accession:	<a href="#">NM_006100</a>
Pathways:	<a href="#">Glycosaminoglycan Metabolic Process</a>

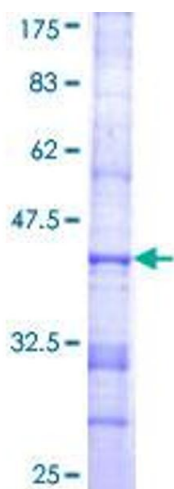
## Application Details

Application Notes:	Optimal working dilution should be determined by the investigator.
Comment:	Preparation method: in vitro, wheat germ expression system Product Quality tested by: 12.5% SDS-PAGE Stained with Coomassie Blue.
Restrictions:	For Research Use only

## Handling

Buffer:	50 mM Tris-HCl, 10 mM reduced Glutathione, pH =8.0 in the elution buffer.
Handling Advice:	Aliquot to avoid repeated freezing and thawing.
Storage:	-80 °C
Storage Comment:	Best use within three months from the date of receipt of this protein.

## Images



### SDS-PAGE

Image 1.