



[Go to Product page](#)

Datasheet for ABIN1321518  
**ST7 Protein (AA 1-547) (GST tag)**

1 Image

Overview

Quantity:	10 µg
Target:	ST7
Protein Characteristics:	AA 1-547
Origin:	Human
Source:	Wheat germ
Protein Type:	Recombinant
Purification tag / Conjugate:	This ST7 protein is labelled with GST tag.
Application:	ELISA, Western Blotting (WB), Affinity Purification (AP), Antibody Array (AA)

Product Details

Purpose:	ST7 (Human) Recombinant Protein (P01)
Sequence:	MAEAATGFLE QLKSCIVSW TYLWTVWFFI VLFLVYILRV PLKINDNLST VSMFLNTLTP KFYVALTGTS SLISGLILIF EWWYFRKYGT SFIEQVSVSH LRPLGGVDN NSSNNSDSNR QSVSECKVWR NPLNLFRAE YNRYTWVTGR EPLTYDMNL SAQDHQTFFT CDSHRLRPAD AIMQKAWRER NPQARISAAH EALEINECAT AYILLAEAAA TTIAEAELKF KQALKAGDGC YRRSQQLQHH GSQYEAQHRR DTNVLVYIKR RLAMCARRLG RTREAVKMMR DLMKEFPLLS MFNIHENLLE ALLELQAYAD VQAVLAKYDD ISLPKSATIC YTAALLKARA VSDKFSPEAA SRRGLSTAEM NAVEAIHRAV EFNPHVPKYL LEMKSLILPP EHILKRGDSE AIAYAFFHLA HWKRVEGALN LLHCTWEGTF RMIPYPLEKG HLFYPYPICT ETADRELLPS FHEVSVYPPK ELPFFILFTA GLCSFTAMLA LLTHQPELM GVFAKAFLLST LFAPLNFVME KVESILPSSL WHQLTRI
Characteristics:	Human ST7 full-length ORF ( AAH30954.1, 1 a.a. - 547 a.a.) recombinant protein with GST-tag at N-terminal.

## Product Details

---

Purification: in vitro wheat germ expression system

## Target Details

---

Target: ST7

Alternative Name: ST7 ([ST7 Products](#))

Background: Full Gene Name: suppression of tumorigenicity 7  
Synonyms: DKFZp76202113,ETS7q,FAM4A,FAM4A1,HELG,RAY1,SEN4,TSG7

Gene ID: 7982

## Application Details

---

Application Notes: Optimal working dilution should be determined by the investigator.

Comment: Preparation method: in vitro, wheat germ expression system  
Product Quality tested by: 12.5% SDS-PAGE Stained with Coomassie Blue.

Restrictions: For Research Use only

## Handling

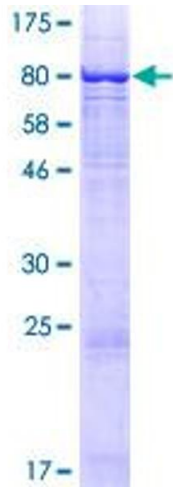
---

Buffer: 50 mM Tris-HCl, 10 mM reduced Glutathione, pH =8.0 in the elution buffer.

Handling Advice: Aliquot to avoid repeated freezing and thawing.

Storage: -80 °C

Storage Comment: Best use within three months from the date of receipt of this protein.



**Image 1.**