

Datasheet for ABIN1321522

**ST8SIA1 Protein (AA 61-160) (GST tag)**[Go to Product page](#)**1** Image

## Overview

Quantity:	10 µg
Target:	ST8SIA1
Protein Characteristics:	AA 61-160
Origin:	Human
Source:	Wheat germ
Protein Type:	Recombinant
Purification tag / Conjugate:	This ST8SIA1 protein is labelled with GST tag.
Application:	ELISA, Western Blotting (WB), Affinity Purification (AP), Antibody Array (AA)

## Product Details

Purpose:	ST8SIA1 (Human) Recombinant Protein (Q01)
Sequence:	VLQQGTAWRR NQTAARAFRK QMEDCCPAH LFAMTKMNSP MGKSMWYDGE FLYSFTIDNS TYSLFPQATP FQLPLKKCAV VGNGGILKKS GCGRQIDEAN
Characteristics:	Human ST8SIA1 partial ORF ( NP_003025, 61 a.a. - 160 a.a.) recombinant protein with GST-tag at N-terminal.
Purification:	in vitro wheat germ expression system

## Target Details

Target:	ST8SIA1
Alternative Name:	ST8SIA1 ( <a href="#">ST8SIA1 Products</a> )

## Target Details

Background:	Full Gene Name: ST8 alpha-N-acetyl-neuraminide alpha-2,8-sialyltransferase 1 Synonyms: GD3S,SIAT8,SIAT8A,ST8Sial
Gene ID:	6489
NCBI Accession:	<a href="#">NM_003034</a>

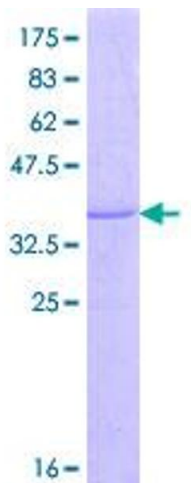
## Application Details

Application Notes:	Optimal working dilution should be determined by the investigator.
Comment:	Preparation method: in vitro, wheat germ expression system Product Quality tested by: 12.5% SDS-PAGE Stained with Coomassie Blue.
Restrictions:	For Research Use only

## Handling

Buffer:	50 mM Tris-HCl, 10 mM reduced Glutathione, pH =8.0 in the elution buffer.
Handling Advice:	Aliquot to avoid repeated freezing and thawing.
Storage:	-80 °C
Storage Comment:	Best use within three months from the date of receipt of this protein.

## Images



**Image 1.**