



[Go to Product page](#)

Datasheet for ABIN1321547

## STAG3L1 Protein (AA 1-205) (GST tag)

### 1 Image

#### Overview

Quantity:	25 µg
Target:	STAG3L1
Protein Characteristics:	AA 1-205
Origin:	Human
Source:	Wheat germ
Protein Type:	Recombinant
Purification tag / Conjugate:	This STAG3L1 protein is labelled with GST tag.
Application:	ELISA, Western Blotting (WB), Affinity Purification (AP), Antibody Array (AA)

#### Product Details

Purpose:	STAG3L1 (Human) Recombinant Protein (P01)
Sequence:	MIFSMLRKLP KVTCRDVLP EIRAICIEEIG CWMQSYSTSF LTDSYLKYIG WTLHDKHREV RVKCVKALKG LYGNRDLTAR LELFTGRFKD WMVSMIVDRE YSVAVEAVRL LILILKLFYP ECEIRTMGGR EQRQSPGAQR TFFQLLLSFF VESKLHDHAA YLVDNLWDCA GTQLKDW EGL TSLLEK DQS TCHMEPGPGT FHLLG
Characteristics:	Human STAG3L1 full-length ORF ( NP_061864.2, 1 a.a. - 205 a.a.) recombinant protein with GST-tag at N-terminal.
Purification:	in vitro wheat germ expression system

#### Target Details

Target:	STAG3L1
---------	---------

## Target Details

Alternative Name:	STAG3L1 ( <a href="#">STAG3L1 Products</a> )
Background:	Full Gene Name: stromal antigen 3-like 1 Synonyms: DKFZp434A0131,MGC131759,MGC40269
Gene ID:	54441
NCBI Accession:	<a href="#">NM_018991</a>

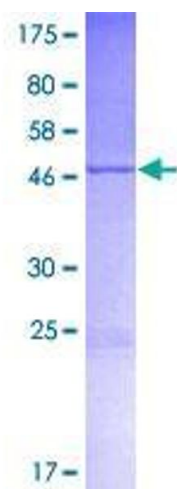
## Application Details

Application Notes:	Optimal working dilution should be determined by the investigator.
Comment:	Preparation method: in vitro, wheat germ expression system Product Quality tested by: 12.5% SDS-PAGE Stained with Coomassie Blue.
Restrictions:	For Research Use only

## Handling

Buffer:	50 mM Tris-HCl, 10 mM reduced Glutathione, pH =8.0 in the elution buffer.
Handling Advice:	Aliquot to avoid repeated freezing and thawing.
Storage:	-80 °C
Storage Comment:	Best use within three months from the date of receipt of this protein.

## Images



**Image 1.**