



[Go to Product page](#)

Datasheet for ABIN1321549

## STAM Protein (AA 1-403) (GST tag)

### 1 Image

#### Overview

Quantity:	10 µg
Target:	STAM
Protein Characteristics:	AA 1-403
Origin:	Human
Source:	Wheat germ
Protein Type:	Recombinant
Purification tag / Conjugate:	This STAM protein is labelled with GST tag.
Application:	Western Blotting (WB), ELISA, Affinity Purification (AP), Antibody Array (AA)

#### Product Details

Purpose:	STAM (Human) Recombinant Protein (P01)
Sequence:	MPLFATNPFQDVEKATSEM NTAEDWGLIL DICDKVGQSR TGPDKCLRSI MRRVNHKDPH VAMQALTLLG ACVSNCGKIF HLEVCSRFA SEVSNVLNKG HPKVCEKLKA LMVEWTDEFK NDPQLSLISA MIKLNKEQGV TPAIGSQAA EQAKASPALV AKDPGTVANK KEEEDLAKAI ELSLKEQRQQ STTLSTLYPS TSSLLTNHQH EGRKVRAYD FEAEDNELT FKAGEIITVL DDSDPNWWKG ETHQGIGLFP SNFVTAYLTA EPEMIKTEKK TVQFSDDVQV ETIEPEPEPA FIDEDKMDQL LQMLQSTDPS DDQPDPELL HLEAMCHQMG PLIDEKLEDI DRKHSELSEL NVKVMEALSL YTKLMNEDPM YSMYAKLQNP PGSGPTIRKP SPS
Characteristics:	Human STAM full-length ORF ( AAH30586, 1 a.a. - 403 a.a.) recombinant protein with GST-tag at N-terminal.
Purification:	in vitro wheat germ expression system

## Target Details

Target:	STAM
Alternative Name:	STAM ( <a href="#">STAM Products</a> )
Background:	Full Gene Name: signal transducing adaptor molecule (SH3 domain and ITAM motif) 1 Synonyms: DKFZp686J2352,STAM1
Gene ID:	8027
Pathways:	<a href="#">EGFR Signaling Pathway</a> , <a href="#">EGFR Downregulation</a>

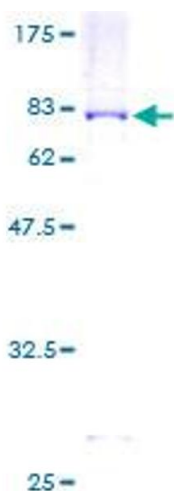
## Application Details

Application Notes:	Optimal working dilution should be determined by the investigator.
Comment:	Preparation method: in vitro, wheat germ expression system Product Quality tested by: 12.5% SDS-PAGE Stained with Coomassie Blue.
Restrictions:	For Research Use only

## Handling

Buffer:	50 mM Tris-HCl, 10 mM reduced Glutathione, pH =8.0 in the elution buffer.
Handling Advice:	Aliquot to avoid repeated freezing and thawing.
Storage:	-80 °C
Storage Comment:	Best use within three months from the date of receipt of this protein.

## Images



**Image 1.**