



[Go to Product page](#)

Datasheet for ABIN1321565  
**STAR Protein (AA 1-285) (GST tag)**

1 Image

Overview

Quantity:	25 µg
Target:	STAR
Protein Characteristics:	AA 1-285
Origin:	Human
Source:	Wheat germ
Protein Type:	Recombinant
Purification tag / Conjugate:	This STAR protein is labelled with GST tag.
Application:	ELISA, Western Blotting (WB), Affinity Purification (AP), Antibody Array (AA)

Product Details

Purpose:	STAR (Human) Recombinant Protein (P02)
Sequence:	MLLATFKLCA GSSYRHMRNM KGLRQQAVMA ISQELNRRAL GGPTPSTWIN QVRRRSLLG SRLEETLYSD QELAYLQQGE EAMQKALGIL SNQEGWKKES QQDNGDKVMS KVPDVGKVF RLEVVDQPM ERLYEELVER MEAMGEWNPV VKEIKVLQKI GKDTFITHEL AAEEAGNLVG PRDFVSVRCA KRRGSTCVLA GMATDFGNMP EQKGVIRAEH GPTCMVLHPL AGSPSKTKLT WLLSIDLKGW LPKSIINQVL SQTQVDFANH LKRLESHPA SEARC
Characteristics:	Human STAR full-length ORF ( NP_000340.2, 1 a.a. - 285 a.a.) recombinant protein with GST-tag at N-terminal.
Purification:	in vitro wheat germ expression system

## Target Details

---

Target:	STAR
Alternative Name:	STAR ( <a href="#">STAR Products</a> )
Background:	Full Gene Name: steroidogenic acute regulatory protein Synonyms: STARD1
Gene ID:	6770
NCBI Accession:	<a href="#">NM_000349</a>
Pathways:	<a href="#">Metabolism of Steroid Hormones and Vitamin D</a> , <a href="#">Response to Growth Hormone Stimulus</a> , <a href="#">C21-Steroid Hormone Metabolic Process</a> , <a href="#">Cellular Response to Molecule of Bacterial Origin</a> , <a href="#">Carbohydrate Homeostasis</a>

## Application Details

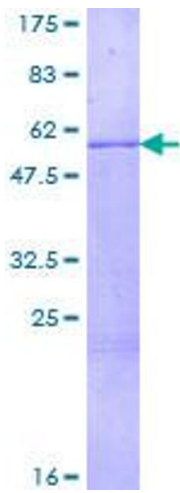
---

Application Notes:	Optimal working dilution should be determined by the investigator.
Comment:	Preparation method: in vitro, wheat germ expression system Product Quality tested by: 12.5% SDS-PAGE Stained with Coomassie Blue.
Restrictions:	For Research Use only

## Handling

---

Buffer:	50 mM Tris-HCl, 10 mM reduced Glutathione, pH =8.0 in the elution buffer.
Handling Advice:	Aliquot to avoid repeated freezing and thawing.
Storage:	-80 °C
Storage Comment:	Best use within three months from the date of receipt of this protein.



**Image 1.**