

Datasheet for ABIN1321568

**STARD10 Protein (AA 1-291) (GST tag)**[Go to Product page](#)**1** Image

## Overview

Quantity:	10 µg
Target:	STARD10
Protein Characteristics:	AA 1-291
Origin:	Human
Source:	Wheat germ
Protein Type:	Recombinant
Purification tag / Conjugate:	This STARD10 protein is labelled with GST tag.
Application:	ELISA, Western Blotting (WB), Affinity Purification (AP), Antibody Array (AA)

## Product Details

Purpose:	STARD10 (Human) Recombinant Protein (P01)
Sequence:	MEKLAASTEP QGPRPVLGRE SVQVPDDQDF RSFRSECEAE VGWNLTYSTRA GVSVWVQAVE MDRTLHKIKC RMECCDPAE TLYDVLHDIE YRKKWDSNVI ETFDIARLTV NADVGYYSWR CPKPLKNRDV ITLRSWLPMG ADYIIMNYSV KHPKYPPRKD LVRAVSIQTG YLIQSTGPKS CVITYLAQVD PKGSLPKWVV NKSSQFLAPK AMKKMYKACL KYPEWKQKHL PHFKPWLHPE QSPLPSLALS ELSVQHADSL ENIDESAVAE SREERMGGAG GEGSDDDTSL T
Characteristics:	Human STARD10 full-length ORF ( NP_006636.2, 1 a.a. - 291 a.a.) recombinant protein with GST-tag at N-terminal.
Purification:	in vitro wheat germ expression system

## Target Details

Target:	STARD10
Alternative Name:	STARD10 ( <a href="#">STARD10 Products</a> )
Background:	Full Gene Name: StAR-related lipid transfer (START) domain containing 10 Synonyms: CGI-52,MGC14401,NY-CO-28,PCTP2,SDCCAG28
Gene ID:	10809
NCBI Accession:	<a href="#">NM_006645</a>

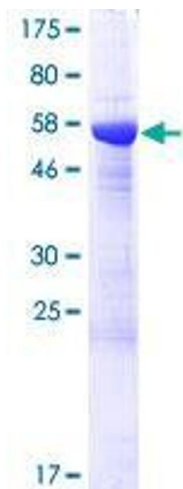
## Application Details

Application Notes:	Optimal working dilution should be determined by the investigator.
Comment:	Preparation method: in vitro, wheat germ expression system Product Quality tested by: 12.5% SDS-PAGE Stained with Coomassie Blue.
Restrictions:	For Research Use only

## Handling

Buffer:	50 mM Tris-HCl, 10 mM reduced Glutathione, pH =8.0 in the elution buffer.
Handling Advice:	Aliquot to avoid repeated freezing and thawing.
Storage:	-80 °C
Storage Comment:	Best use within three months from the date of receipt of this protein.

## Images



**Image 1.**