

Datasheet for ABIN1321578
STARD5 Protein (AA 1-213) (GST tag)



[Go to Product page](#)

1 Image

Overview

Quantity:	10 µg
Target:	STARD5
Protein Characteristics:	AA 1-213
Origin:	Human
Source:	Wheat germ
Protein Type:	Recombinant
Purification tag / Conjugate:	This STARD5 protein is labelled with GST tag.
Application:	ELISA, Western Blotting (WB), Affinity Purification (AP), Antibody Array (AA)

Product Details

Purpose:	STARD5 (Human) Recombinant Protein (P01)
Sequence:	MDPALAAQMS EAVA EKMLQY RRDTAGWKIC REGNGVSVSW RPSVEFPGNL YRGE GIVYGT LEEVWDCVKP AVGG LRVKWD ENVTGF EIIQ SITDTLCVSR TSTPSAAMKL ISPRDFVDLV LVKRYEDGTI SSNATHVEHP LCPPKPGFVR GFNHPCGCFC EPLPGEPTKT NLVTF FHTDL SGYLPQNVVD SFFPRSMTRF YANLQKAVKQ FHE
Characteristics:	Human STARD5 full-length ORF (NP_871629.1, 1 a.a. - 213 a.a.) recombinant protein with GST-tag at N-terminal.
Purification:	in vitro wheat germ expression system

Target Details

Target:	STARD5
---------	--------

Target Details

Alternative Name:	STARD5 (STARD5 Products)
Background:	Full Gene Name: StAR-related lipid transfer (START) domain containing 5 Synonyms: MGC10327
Gene ID:	80765
NCBI Accession:	NM_181900
Pathways:	Metabolism of Steroid Hormones and Vitamin D, C21-Steroid Hormone Metabolic Process

Application Details

Application Notes:	Optimal working dilution should be determined by the investigator.
Comment:	Preparation method: in vitro, wheat germ expression system Product Quality tested by: 12.5% SDS-PAGE Stained with Coomassie Blue.
Restrictions:	For Research Use only

Handling

Buffer:	50 mM Tris-HCl, 10 mM reduced Glutathione, pH =8.0 in the elution buffer.
Handling Advice:	Aliquot to avoid repeated freezing and thawing.
Storage:	-80 °C
Storage Comment:	Best use within three months from the date of receipt of this protein.

Images

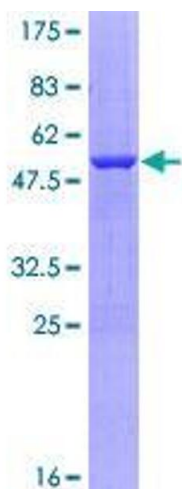


Image 1.