



Datasheet for ABIN1321604
STAT5B Protein (AA 1-390) (GST tag)



[Go to Product page](#)

1 Image

Overview

Quantity:	10 µg
Target:	STAT5B
Protein Characteristics:	AA 1-390
Origin:	Human
Source:	Wheat germ
Protein Type:	Recombinant
Purification tag / Conjugate:	This STAT5B protein is labelled with GST tag.
Application:	Western Blotting (WB), ELISA, Affinity Purification (AP), Antibody Array (AA)

Product Details

Purpose:	STAT5B (Human) Recombinant Protein (P01)
Sequence:	MAVWIIQAQQL QGEALHQMQA LYGQHFPIEV RHYLSQWIES QAWDSVDLDN PQENIKATQL LEGLVQELQK KAEHQVGEDG FLLKIKLGHY ATQLQNTYDR CPMELVRCIR HILYNEQRLV REANNGSSPA GSLADAMSQK HLQINQTFEE LRLVTQDTEN ELKKLQQTQE YFIIQYQESL RIIAQFGPLA QLSPQERLSR ETALQKQKQVS LEAWLQREAQ TLQQYRVELA EKHQKTLQLL RKQQTIIIDD ELIQWKRRQQ LAGNGGPEEG SLDVLQSWCE KLAEIWQNR QQIRRAEHLK QQLPIGPVE EMLAEVNATI TDIISALVTS TFIIEKQPPQ VLKQTQKFAA TVRLLVGGKL NVHNMNPPQVK ATIISEQQAK SLLKNENTRK
Characteristics:	Human STAT5B full-length ORF (AAH20868, 1 a.a. - 390 a.a.) recombinant protein with GST-tag at N-terminal.
Purification:	in vitro wheat germ expression system

Target Details

Target:	STAT5B
Alternative Name:	STAT5B (STAT5B Products)
Background:	Full Gene Name: signal transducer and activator of transcription 5B Synonyms: STAT5
Gene ID:	6777
Pathways:	JAK-STAT Signaling , RTK Signaling , Response to Growth Hormone Stimulus , C21-Steroid Hormone Metabolic Process , Regulation of Leukocyte Mediated Immunity , Positive Regulation of Immune Effector Process , CXCR4-mediated Signaling Events , Activated T Cell Proliferation

Application Details

Application Notes:	Optimal working dilution should be determined by the investigator.
Comment:	Preparation method: in vitro, wheat germ expression system Product Quality tested by: 12.5% SDS-PAGE Stained with Coomassie Blue.
Restrictions:	For Research Use only

Handling

Buffer:	50 mM Tris-HCl, 10 mM reduced Glutathione, pH =8.0 in the elution buffer.
Handling Advice:	Aliquot to avoid repeated freezing and thawing.
Storage:	-80 °C
Storage Comment:	Best use within three months from the date of receipt of this protein.

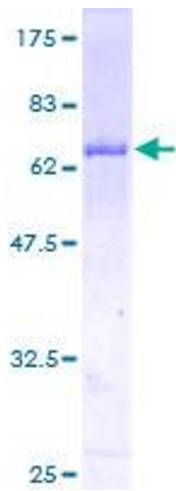


Image 1.