



[Go to Product page](#)

Datasheet for ABIN1321643

STIP1 Protein (AA 240-340) (GST tag)

1 Image

Overview

Quantity:	10 µg
Target:	STIP1
Protein Characteristics:	AA 240-340
Origin:	Human
Source:	Wheat germ
Protein Type:	Recombinant
Purification tag / Conjugate:	This STIP1 protein is labelled with GST tag.
Application:	Western Blotting (WB), ELISA, Affinity Purification (AP), Antibody Array (AA)

Product Details

Purpose:	STIP1 (Human) Recombinant Protein (Q05)
Sequence:	DFDTALKHYD KAKELDPTNM TYITNQAAYV FEKGDYNKCR ELCEKAIEVG RENREDYRQI AKAYARIGNS YFKEEKYKDA IHFYNKSLAE HRTPDVLKKC Q
Characteristics:	Human STIP1 partial ORF (AAH02987.1, 240 a.a. - 340 a.a.) recombinant protein with GST-tag at N-terminal.
Purification:	in vitro wheat germ expression system

Target Details

Target:	STIP1
Alternative Name:	STIP1 (STIP1 Products)

Target Details

Background: Full Gene Name: stress-induced-phosphoprotein 1
Synonyms: HOP,IEF-SSP-3521,P60,STI1,STI1L

Gene ID: 10963

Application Details

Application Notes: Optimal working dilution should be determined by the investigator.

Comment: Preparation method: in vitro, wheat germ expression system
Product Quality tested by: 12.5% SDS-PAGE Stained with Coomassie Blue.

Restrictions: For Research Use only

Handling

Buffer: 50 mM Tris-HCl, 10 mM reduced Glutathione, pH =8.0 in the elution buffer.

Handling Advice: Aliquot to avoid repeated freezing and thawing.

Storage: -80 °C

Storage Comment: Best use within three months from the date of receipt of this protein.

Images

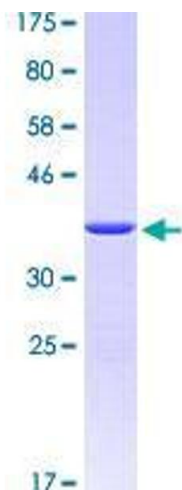


Image 1.