



[Go to Product page](#)

Datasheet for ABIN1321656

STK16 Protein (AA 1-305) (GST tag)

1 Image

Overview

Quantity:	10 µg
Target:	STK16
Protein Characteristics:	AA 1-305
Origin:	Human
Source:	Wheat germ
Protein Type:	Recombinant
Purification tag / Conjugate:	This STK16 protein is labelled with GST tag.
Application:	Western Blotting (WB), ELISA, Affinity Purification (AP), Antibody Array (AA)

Product Details

Purpose:	STK16 (Human) Recombinant Protein (P01)
Sequence:	MGHALCVCSR GTVIIDNKRY LFIQKLGEGG FSYVDLVEGL HDGHFYALKR ILCHEQQDRE EAQREADMHR LFNHPNLR VAYCLRERGA KHEAWLLLPF FKRGLTWNEI ERLKDKGNFL TEDQILWLLL GICRGLEAIH AKGYAHRDLK PTNILLGDEG QPVLMDLGSM NQACIHVEGS RQALTLQDWA AQRCTISYRA PELFSVQSHC VIDERTDVWS LGCVLYAMMF GEGPYDMVFQ KGDSVALAVQ NQLSIPQSPR HSSALWQLLN SMMTVDPHQR PHIPLLSQL EALQPPAPGQ HTTQI
Characteristics:	Human STK16 full-length ORF (AAH02618, 1 a.a. - 305 a.a.) recombinant protein with GST-tag at N-terminal.
Purification:	in vitro wheat germ expression system

Target Details

Target:	STK16
Alternative Name:	STK16 (STK16 Products)
Background:	Full Gene Name: serine/threonine kinase 16 Synonyms: FLJ39635,KRCT,MPSK,PKL12,TSF1
Gene ID:	8576

Application Details

Application Notes:	Optimal working dilution should be determined by the investigator.
Comment:	Preparation method: in vitro, wheat germ expression system Product Quality tested by: 12.5% SDS-PAGE Stained with Coomassie Blue.
Restrictions:	For Research Use only

Handling

Buffer:	50 mM Tris-HCl, 10 mM reduced Glutathione, pH =8.0 in the elution buffer.
Handling Advice:	Aliquot to avoid repeated freezing and thawing.
Storage:	-80 °C
Storage Comment:	Best use within three months from the date of receipt of this protein.

Images

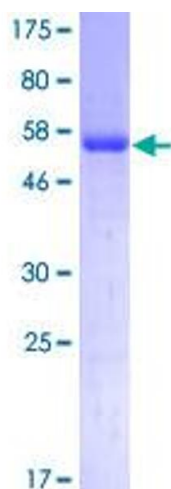


Image 1.