

Datasheet for ABIN1321680  
**STK31 Protein (AA 1-1019) (GST tag)**



[Go to Product page](#)

1 Image

### Overview

Quantity:	10 µg
Target:	STK31
Protein Characteristics:	AA 1-1019
Origin:	Human
Source:	Wheat germ
Protein Type:	Recombinant
Purification tag / Conjugate:	This STK31 protein is labelled with GST tag.
Application:	Western Blotting (WB), ELISA, Affinity Purification (AP), Antibody Array (AA)

### Product Details

Purpose:	STK31 (Human) Recombinant Protein (P01)
Sequence:	<p>MWVQGHSSRA SATESVSFSG IVQMDEDTHY DKVEDVVGSH IEDAVTFWAQ SINRNKDIMK            IGCSLSEVCP HASSVLGNLD PNKIYGGFLFS EDQCWYRCKV LKISVEKCL VRYIDYGNTE            ILNRSDIVEI PLELQFSSVA KKYKLWGLHI PSDQEVTFD QGTTFLGSLI FEKEIKMRIK            ATSEDTGTVIA QAEYGSVDIG EEVLKKGFAE KCRLASRTDI CEEKKLDPGQ LVLRNLKSPI            PLWGHRSNQS TFSRPGHLS EKMTLDLKDE NDAGNLITFP KESLAVGDFN LGSNVSLEKI            KQDQKLIEN EKLKTEKDAL LESYKALELK VEQIAQELQQ EKAAAVDLTN HLEYTLKTYI            DTRMKNLAAK MEILKEMRHV DISVRFKDL SDAIQVLDEG CFTTPASLNG LEIWAEYSL            AQENIKTCEY VSEGNILIAQ RNEMQQKLYM SVEDFILEVD ESSLNKRKLT LQDLSVSLEA            VYQAKEGAN SDEILKKFYD WKCDKREEFT SVRSETDASL HRLVAWFQRT LKVFDSLVEG            SLISEDAMDN IDEILEKTES SVCKELEIAL VDQGDADKEI ISNTYSQVLQ KIHSEERLIA TVQAKYKDSI            EFKKQLIEYL NKSPSVDHLL SIKKTLKSLK ALLRWKLVEK SNLEESDDPD GSQIEKIKEE</p>

## Product Details

---

ITQLRNNVFQ EIYHEREEYE MLTSLAQKWF PELPLLHPEI GLLKYMNSGG LLTMSLERDL  
LDAEPMKELS SKRPLVRSEV NGQIILLKGY SVDVDTEAKV IERAATYHRA WREAEGDSGL  
LPLIFLFLCK SDPMAYLMVP YYPRANLNAV QANMPLNSEE TLKVMKGVAQ GLHTLHKADI  
IHGSLHQNNV FALNREQGIV GDFDFTKSVS QRASVNMVMVG DLSLMSPELK MGKPASPGSD  
LYAYGCLLLW LSVQNQEFEI NKDGIPKVDQ FHLDDKVKSL LCSLICYRSS MTAEQVLNAE  
CFLMPKEQSV PNPEKDTEYT LYKKEEEIKT ENLDKCMEKT RNGEANFDC

Characteristics: Human STK31 full-length ORF ( AAH59374.1, 1 a.a. - 1019 a.a.) recombinant protein with GST-tag at N-terminal.

Purification: in vitro wheat germ expression system

## Target Details

---

Target: STK31

Alternative Name: STK31 ([STK31 Products](#))

Background: Full Gene Name: serine/threonine kinase 31  
Synonyms: FLJ16102,SGK396,TDRD8

Gene ID: 56164

## Application Details

---

Application Notes: Optimal working dilution should be determined by the investigator.

Comment: Preparation method: in vitro, wheat germ expression system  
Product Quality tested by: 12.5% SDS-PAGE Stained with Coomassie Blue.

Restrictions: For Research Use only

## Handling

---

Buffer: 50 mM Tris-HCl, 10 mM reduced Glutathione, pH =8.0 in the elution buffer.

Handling Advice: Aliquot to avoid repeated freezing and thawing.

Storage: -80 °C

Storage Comment: Best use within three months from the date of receipt of this protein.

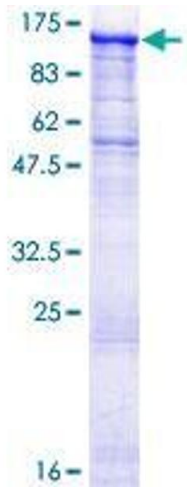


Image 1.