

Datasheet for ABIN1321684  
**STK32A Protein (AA 1-166) (GST tag)**



[Go to Product page](#)

1 Image

## Overview

Quantity:	10 µg
Target:	STK32A
Protein Characteristics:	AA 1-166
Origin:	Human
Source:	Wheat germ
Protein Type:	Recombinant
Purification tag / Conjugate:	This STK32A protein is labelled with GST tag.
Application:	ELISA, Western Blotting (WB), Affinity Purification (AP), Antibody Array (AA)

## Product Details

Purpose:	STK32A (Human) Recombinant Protein (P01)
Sequence:	MGANTSRKPP VFDENEDVNF DHFEILRAIG KGSFGKVCIV QKNDTKKMYA MKYMNKQKCV ERNEVRNVFK ELQIMQGLEH PFLVNLWYSF QDEEDMFMVW DLLLGGDLRY HLQQNVHFKE ETVKLFICEL VMALDYLQNNQ RIIHRDMKPD NILLDEHDTW LSYKSH
Characteristics:	Human STK32A full-length ORF ( AAH21666, 1 a.a. - 166 a.a.) recombinant protein with GST-tag at N-terminal.
Purification:	in vitro wheat germ expression system

## Target Details

Target:	STK32A
Alternative Name:	STK32A ( <a href="#">STK32A Products</a> )

## Target Details

Background: Full Gene Name: serine/threonine kinase 32A  
Synonyms: MGC22688,YANK1

Gene ID: 202374

## Application Details

Application Notes: Optimal working dilution should be determined by the investigator.

Comment: Preparation method: in vitro, wheat germ expression system  
Product Quality tested by: 12.5% SDS-PAGE Stained with Coomassie Blue.

Restrictions: For Research Use only

## Handling

Buffer: 50 mM Tris-HCl, 10 mM reduced Glutathione, pH =8.0 in the elution buffer.

Handling Advice: Aliquot to avoid repeated freezing and thawing.

Storage: -80 °C

Storage Comment: Best use within three months from the date of receipt of this protein.

## Images

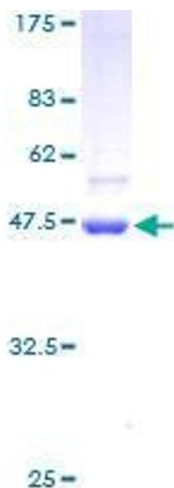


Image 1.