



[Go to Product page](#)

Datasheet for ABIN1321692

STK32C Protein (AA 1-369) (GST tag)

2 Images

Overview

Quantity:	10 µg
Target:	STK32C
Protein Characteristics:	AA 1-369
Origin:	Human
Source:	Wheat germ
Protein Type:	Recombinant
Purification tag / Conjugate:	This STK32C protein is labelled with GST tag.
Application:	ELISA, Western Blotting (WB), Affinity Purification (AP), Antibody Array (AA), Kinase Activity Assay (KAA)

Product Details

Purpose:	STK32C (Human) Recombinant Protein (P01)
Sequence:	MYAMKYMNKQ QCIERDEV RN VFRELEILQE IEHVFLVNLW YSFQDEEDMF MVVDLLLGGD LRYHLQQNVQ FSEDTVRLYI CEMALALDYL RGQHIIHRDV KPDNILLDER GHHLTDFNI ATIIKDGERA TALAGTKPYM APEIFHSFVN GGTGYSFEVD WWSVGVMAYE LLRGWRPYDI HSSNAVESLV QLFSTVSVQY VPTWSKEMVA LLRKLLTVNP EHLSSLQDV QAAPALAGVL WDHLSEKRVE PGFVPNKGR L HCDPTFELEE MILESRLPHK KKKRLAKNKS RDNSRDSSQS ENDYLQDCLD AIQQDFVIFN REKLKRSQDL PREPLPAPES RDAAEPEVEDE AERSALPMCG PICPSAGSG
Characteristics:	Human STK32C full-length ORF (AAH15792, 1 a.a. - 369 a.a.) recombinant protein with GST-tag at N-terminal.

Product Details

Purification: in vitro wheat germ expression system

Target Details

Target: STK32C

Alternative Name: STK32C ([STK32C Products](#))

Background: Full Gene Name: serine/threonine kinase 32C
Synonyms: MGC23665,PKE,RP11-140A10.1,YANK3

Gene ID: 282974

Application Details

Application Notes: Optimal working dilution should be determined by the investigator.

Comment: Preparation method: in vitro, wheat germ expression system
Product Quality tested by: 12.5% SDS-PAGE Stained with Coomassie Blue.

Restrictions: For Research Use only

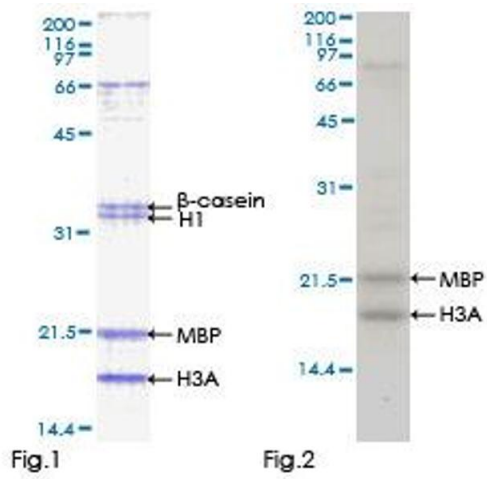
Handling

Buffer: 50 mM Tris-HCl, 10 mM reduced Glutathione, pH =8.0 in the elution buffer.

Handling Advice: Aliquot to avoid repeated freezing and thawing.

Storage: -80 °C

Storage Comment: Best use within three months from the date of receipt of this protein.



Kinase Activity Assay

Image 1.

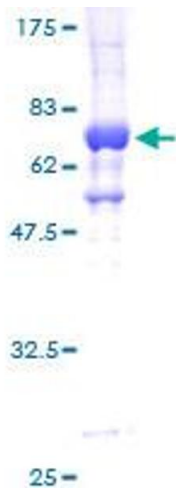


Image 2.