



[Go to Product page](#)

Datasheet for ABIN1321745

## STRADB Protein (AA 1-418) (GST tag)

### 2 Images

#### Overview

Quantity:	10 µg
Target:	STRADB
Protein Characteristics:	AA 1-418
Origin:	Human
Source:	Wheat germ
Protein Type:	Recombinant
Purification tag / Conjugate:	This STRADB protein is labelled with GST tag.
Application:	ELISA, Western Blotting (WB), Affinity Purification (AP), Antibody Array (AA), Kinase Activity Assay (KAA)

#### Product Details

Purpose:	STRADB (Human) Recombinant Protein (P01)
Sequence:	MSLLDCFCTS RTQVESLRPE KQSETSIHQY LVDEPTLSWS RPSTRASEVL CSTNVSHYEL QVEIGRGFND LTSVHLARHT PTGTLVTIKI TNLENCNEER LKALQKAVIL SHFFRHPNIT TYWTVFTVGS WLWVISPFMA YGSASQLLRT YFPEGMSETL IRNILFGAVR GLNYLHQNGC IHRSIKASHI LISGDGLVTL SGLSHLHSLV KHGQRHRAVY DFPQFSTSVQ PWLSPELLRQ DLHGYNVKSD IYSVGITACE LASGQVPFQD MHRTQMLLQK LKGPPYSPLD ISIFPQSESR MKNSQSGVDS GIGESVLVSS GTHTVNSDRL HTPSSKTFSP AFFSLVQLCL QQDPEKRPSA SSLLSHVFFK QMKEESQDSI LSLPPAYNK PSISLPPVLP WTEPECDFPD EKDSYWEF
Characteristics:	Human STRADB full-length ORF ( AAH08302, 1 a.a. - 418 a.a.) recombinant protein with GST-tag at N-terminal.

## Product Details

---

Purification: in vitro wheat germ expression system

## Target Details

---

Target: STRADB

Alternative Name: STRADB ([STRADB Products](#))

Background: Full Gene Name: STE20-related kinase adaptor beta  
Synonyms: ALS2CR2,CALS-21,ILPIP,ILPIPA,MGC102916,PAPK,PRO1038

Gene ID: 55437

Pathways: [AMPK Signaling](#)

## Application Details

---

Application Notes: Optimal working dilution should be determined by the investigator.

Comment: Preparation method: in vitro, wheat germ expression system  
Product Quality tested by: 12.5% SDS-PAGE Stained with Coomassie Blue.

Restrictions: For Research Use only

## Handling

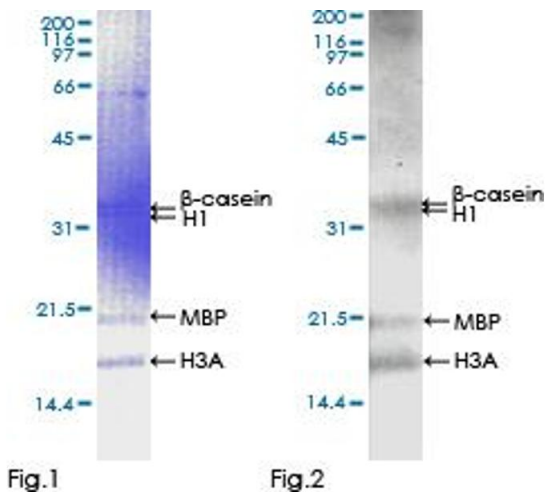
---

Buffer: 50 mM Tris-HCl, 10 mM reduced Glutathione, pH =8.0 in the elution buffer.

Handling Advice: Aliquot to avoid repeated freezing and thawing.

Storage: -80 °C

Storage Comment: Best use within three months from the date of receipt of this protein.



### Kinase Activity Assay

Image 1.



Image 2.