

Datasheet for ABIN1321747
STRADB Protein (AA 319-418) (GST tag)



[Go to Product page](#)

1 Image

Overview

Quantity:	10 µg
Target:	STRADB
Protein Characteristics:	AA 319-418
Origin:	Human
Source:	Wheat germ
Protein Type:	Recombinant
Purification tag / Conjugate:	This STRADB protein is labelled with GST tag.
Application:	ELISA, Western Blotting (WB), Affinity Purification (AP), Antibody Array (AA)

Product Details

Purpose:	STRADB (Human) Recombinant Protein (Q01)
Sequence:	SSGTHTVNSD RLHTPSSKTF SPAFFSLVQL CLQQDPEKRP SASSLLSHVF FKQMKEESQD SILSLLPPAY NKPSISLPPV LPWTEPECDF PDEKDSYWEF
Characteristics:	Human STRADB partial ORF (AAH08302, 319 a.a. - 418 a.a.) recombinant protein with GST-tag at N-terminal.
Purification:	in vitro wheat germ expression system

Target Details

Target:	STRADB
Alternative Name:	STRADB (STRADB Products)

Target Details

Background:	Full Gene Name: STE20-related kinase adaptor beta Synonyms: ALS2CR2,CALS-21,ILPIP,ILPIPA,MGC102916,PAPK,PRO1038
Gene ID:	55437
Pathways:	AMPK Signaling

Application Details

Application Notes:	Optimal working dilution should be determined by the investigator.
Comment:	Preparation method: in vitro, wheat germ expression system Product Quality tested by: 12.5% SDS-PAGE Stained with Coomassie Blue.
Restrictions:	For Research Use only

Handling

Buffer:	50 mM Tris-HCl, 10 mM reduced Glutathione, pH =8.0 in the elution buffer.
Handling Advice:	Aliquot to avoid repeated freezing and thawing.
Storage:	-80 °C
Storage Comment:	Best use within three months from the date of receipt of this protein.

Images

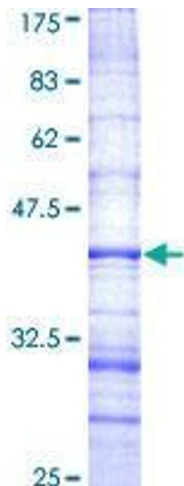


Image 1.