



[Go to Product page](#)

Datasheet for ABIN1321764

STT3B Protein (AA 1-225) (GST tag)

1 Image

Overview

Quantity:	10 µg
Target:	STT3B
Protein Characteristics:	AA 1-225
Origin:	Human
Source:	Wheat germ
Protein Type:	Recombinant
Purification tag / Conjugate:	This STT3B protein is labelled with GST tag.
Application:	ELISA, Western Blotting (WB), Affinity Purification (AP), Antibody Array (AA)

Product Details

Purpose:	STT3B (Human) Recombinant Protein (P01)
Sequence:	MSWWDYGYQI AGMANRTTLV DNNTWNNSHI ALVGKAMSSN ETAAYKIMRT LDVDYVLVIF GGVIGYSGDD INKFLWMVRI AEGEHPKDIR ESDYFTPQGE FRVDKAGSPT LLNCLMYKMS YYRFGEMQLD FRTPPGFDRT RNAEIGNKDI KFKHLEEAFT SEHWLVRIYK VKAPDNRETL DHKPRVTNIF PKQKYLSKKT TKRKRGIYIKN KLVFKKGKKI FKKTV
Characteristics:	Human STT3B full-length ORF (AAH15880.1, 1 a.a. - 225 a.a.) recombinant protein with GST-tag at N-terminal.
Purification:	in vitro wheat germ expression system

Target Details

Target:	STT3B
---------	-------

Target Details

Alternative Name:	STT3B (STT3B Products)
Background:	Full Gene Name: STT3, subunit of the oligosaccharyltransferase complex, homolog B (S. cerevisiae) Synonyms: FLJ90106,SIMP,STT3-B
Gene ID:	201595

Application Details

Application Notes:	Optimal working dilution should be determined by the investigator.
Comment:	Preparation method: in vitro, wheat germ expression system Product Quality tested by: 12.5% SDS-PAGE Stained with Coomassie Blue.
Restrictions:	For Research Use only

Handling

Buffer:	50 mM Tris-HCl, 10 mM reduced Glutathione, pH =8.0 in the elution buffer.
Handling Advice:	Aliquot to avoid repeated freezing and thawing.
Storage:	-80 °C
Storage Comment:	Best use within three months from the date of receipt of this protein.

Images

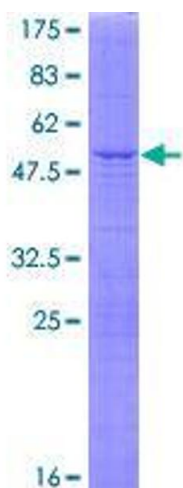


Image 1.