



[Go to Product page](#)

Datasheet for ABIN1321844

SUCLG2 Protein (AA 1-384) (GST tag)

1 Image

Overview

Quantity:	10 µg
Target:	SUCLG2
Protein Characteristics:	AA 1-384
Origin:	Human
Source:	Wheat germ
Protein Type:	Recombinant
Purification tag / Conjugate:	This SUCLG2 protein is labelled with GST tag.
Application:	ELISA, Western Blotting (WB), Affinity Purification (AP), Antibody Array (AA)

Product Details

Purpose:	SUCLG2 (Human) Recombinant Protein (P01)
Sequence:	MSDNGVRVQR FFVADTANEA LEAAKRLNAK EIVLKAQILA GGRGKGVFNS GLKGGVHLTK DPNVVQQLAK QMIGYNLTK QTPKEGVKVN KVMVAEALDI SRETYLAILM DRSCNGPVLV GSPQGGVDIE EVAASNPELI FKEQIDIFEG IKDSQAQRMA ENLGFVGPLK SQAADQITKL YNLFLKIDAT QVEVNPFGET PEGQVVCFDA KINFDDNAEF RQKDIFAMDD KSENEPIENE AAKYDLKYIG LDGNIACFVN GAGLAMATCD IIFLNGGKPA NFLDLGGGVK EAQVYQAFKL LTADPKVEAI LVNIFGGIVN CAIANGITK ACRELELKVP LVVRLEGTNV QEAQKILNNS GLPITSAIDL EDAACKAVAS VAKK
Characteristics:	Human SUCLG2 full-length ORF (NP_003839.1, 1 a.a. - 384 a.a.) recombinant protein with GST-tag at N-terminal.
Purification:	in vitro wheat germ expression system

Target Details

Target:	SUCLG2
Alternative Name:	SUCLG2 (SUCLG2 Products)
Background:	Full Gene Name: succinate-CoA ligase, GDP-forming, beta subunit Synonyms: G-BETA
Gene ID:	8801
NCBI Accession:	NM_003848

Application Details

Application Notes:	Optimal working dilution should be determined by the investigator.
Comment:	Preparation method: in vitro, wheat germ expression system Product Quality tested by: 12.5% SDS-PAGE Stained with Coomassie Blue.
Restrictions:	For Research Use only

Handling

Buffer:	50 mM Tris-HCl, 10 mM reduced Glutathione, pH =8.0 in the elution buffer.
Handling Advice:	Aliquot to avoid repeated freezing and thawing.
Storage:	-80 °C
Storage Comment:	Best use within three months from the date of receipt of this protein.

Images

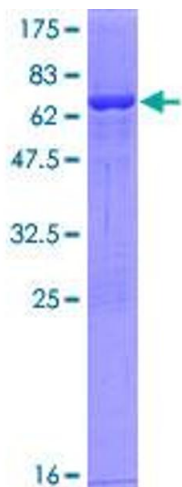


Image 1.