

Datasheet for ABIN1321858
SULF1 Protein (AA 780-871) (GST tag)



[Go to Product page](#)

1 Image

Overview

Quantity:	10 µg
Target:	SULF1
Protein Characteristics:	AA 780-871
Origin:	Human
Source:	Wheat germ
Protein Type:	Recombinant
Purification tag / Conjugate:	This SULF1 protein is labelled with GST tag.
Application:	Western Blotting (WB), ELISA, Affinity Purification (AP), Antibody Array (AA)

Product Details

Purpose:	SULF1 (Human) Recombinant Protein (Q02)
Sequence:	RTVNETHNFL FCEFATGFLE YFDMNTDPYQ LTNTVHTVER GILNQLHVQL MELRSCQGYK QCNPRPKNLD VGNKDGGSYD LHRGQLWDGW EG
Characteristics:	Human SULF1 partial ORF (NP_055985.1, 780 a.a. - 871 a.a.) recombinant protein with GST-tag at N-terminal.
Purification:	in vitro wheat germ expression system

Target Details

Target:	SULF1
Alternative Name:	SULF1 (SULF1 Products)

Target Details

Background:	Full Gene Name: sulfatase 1 Synonyms: FLJ30905,FLJ38022,FLJ41750,HSULF-1,KIAA1077,SULF-1
Gene ID:	23213
NCBI Accession:	NM_015170
Pathways:	EGFR Signaling Pathway

Application Details

Application Notes:	Optimal working dilution should be determined by the investigator.
Comment:	Preparation method: in vitro, wheat germ expression system Product Quality tested by: 12.5% SDS-PAGE Stained with Coomassie Blue.
Restrictions:	For Research Use only

Handling

Buffer:	50 mM Tris-HCl, 10 mM reduced Glutathione, pH =8.0 in the elution buffer.
Handling Advice:	Aliquot to avoid repeated freezing and thawing.
Storage:	-80 °C
Storage Comment:	Best use within three months from the date of receipt of this protein.

Images

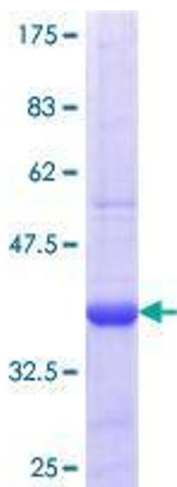


Image 1.