



[Go to Product page](#)

Datasheet for ABIN1321863

SULT1A1 Protein (AA 1-295) (GST tag)

1 Image

Overview

Quantity:	10 µg
Target:	SULT1A1
Protein Characteristics:	AA 1-295
Origin:	Human
Source:	Wheat germ
Protein Type:	Recombinant
Purification tag / Conjugate:	This SULT1A1 protein is labelled with GST tag.
Application:	Western Blotting (WB), ELISA, Affinity Purification (AP), Antibody Array (AA)

Product Details

Purpose:	SULT1A1 (Human) Recombinant Protein (P01)
Sequence:	MELIQDTSRP PLEYVKGVPL IKYFAEALGP LQSFQARPDD LLISTYPKSG TTWVSQILD IYQGGDLEKC HRAPIFMRVP FLEFKAPGIP SGMETLKDTP APRLLKTHLP LALLPQTLLD QKVKVVYVAR NAKDVAVSYY HFYHMAKVHP EPGTWDSFLE KFMVGEVSYG SWYQHVQEW ELSRTHPVLY LFYEDMKENP KREIQKILEF VGHSLPEETV DFWVQHTSFK EMKKNPMTNY TTVPQEFMDH SISPFMRKGM AGDWKTTFTV AQNERFDADY AEKMAGCSLS FRSEL
Characteristics:	Human SULT1A1 full-length ORF (AAH00923, 1 a.a. - 295 a.a.) recombinant protein with GST-tag at N-terminal.
Purification:	in vitro wheat germ expression system

Target Details

Target:	SULT1A1
Alternative Name:	SULT1A1 (SULT1A1 Products)
Background:	Full Gene Name: sulfotransferase family, cytosolic, 1A, phenol-preferring, member 1 Synonyms: HAST1/HAST2,MGC131921,MGC5163,P-PST,PST,ST1A3,STP,STP1,TSPST1
Gene ID:	6817

Application Details

Application Notes:	Optimal working dilution should be determined by the investigator.
Comment:	Preparation method: in vitro, wheat germ expression system Product Quality tested by: 12.5% SDS-PAGE Stained with Coomassie Blue.
Restrictions:	For Research Use only

Handling

Buffer:	50 mM Tris-HCl, 10 mM reduced Glutathione, pH =8.0 in the elution buffer.
Handling Advice:	Aliquot to avoid repeated freezing and thawing.
Storage:	-80 °C
Storage Comment:	Best use within three months from the date of receipt of this protein.

Images

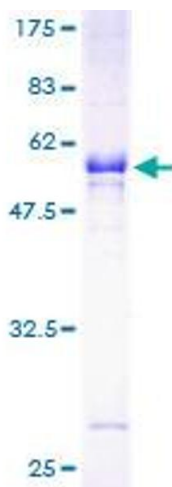


Image 1.