

Datasheet for ABIN1321875

SULT1C4 Protein (AA 1-102) (GST tag)[Go to Product page](#)**1** Image

Overview

Quantity:	10 µg
Target:	SULT1C4
Protein Characteristics:	AA 1-102
Origin:	Human
Source:	Wheat germ
Protein Type:	Recombinant
Purification tag / Conjugate:	This SULT1C4 protein is labelled with GST tag.
Application:	ELISA, Western Blotting (WB), Affinity Purification (AP), Antibody Array (AA)

Product Details

Purpose:	SULT1C4 (Human) Recombinant Protein (P01)
Sequence:	MALHDMEDFT FDGTRLSVN YVKGILQPTD TCDIWDKIWN FQAKPDDLLI STYPKAGTTW TQEIVELIQN EGDVEKSKRA PTHQRFPFLE MKIPSLGSGE YK
Characteristics:	Human SULT1C4 full-length ORF (AAH58861.1, 1 a.a. - 102 a.a.) recombinant protein with GST-tag at N-terminal.
Purification:	in vitro wheat germ expression system

Target Details

Target:	SULT1C4
Alternative Name:	SULT1C4 (SULT1C4 Products)

Target Details

Background:	Full Gene Name: sulfotransferase family, cytosolic, 1C, member 4 Synonyms: MGC149521,MGC34422,SULT1C,SULT1C2
Gene ID:	27233

Application Details

Application Notes:	Optimal working dilution should be determined by the investigator.
Comment:	Preparation method: in vitro, wheat germ expression system Product Quality tested by: 12.5% SDS-PAGE Stained with Coomassie Blue.
Restrictions:	For Research Use only

Handling

Buffer:	50 mM Tris-HCl, 10 mM reduced Glutathione, pH =8.0 in the elution buffer.
Handling Advice:	Aliquot to avoid repeated freezing and thawing.
Storage:	-80 °C
Storage Comment:	Best use within three months from the date of receipt of this protein.

Images

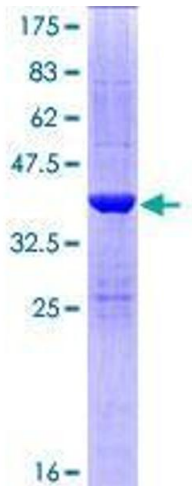


Image 1.