

Datasheet for ABIN1321881
SULT2B1 Protein (AA 1-365) (GST tag)



[Go to Product page](#)

1 Image

Overview

Quantity:	10 µg
Target:	SULT2B1
Protein Characteristics:	AA 1-365
Origin:	Human
Source:	Wheat germ
Protein Type:	Recombinant
Purification tag / Conjugate:	This SULT2B1 protein is labelled with GST tag.
Application:	ELISA, Western Blotting (WB), Affinity Purification (AP), Antibody Array (AA)

Product Details

Purpose:	SULT2B1 (Human) Recombinant Protein (P01)
Sequence:	MDGPAEPQIP GLWDTYEDDI SEISQKLPGE YFRYKGVFPF VGLYSLESLIS LAENTQDVRD DDIFIITYPK SGTWMIIEI CLILKEGDPS WIRSVPIWER APWCETIVGA FSLPDQYSPR LMSSHLPIQI FTKAFFSSKA KVIYMGRNPR DVVVSlyHYS KIAGQLKDPG TPDQFLRDFL KGEVQFGSWF DHIKGWLRMK GKDNFLFITY EELQQLQGS VERICGFLGR PLGKEALGSV VAHSTFSAMK ANTMSNYTLL PPSLLDHRRG AFLRKGVC GD WKNHFTVAQS EAFDRAYRKQ MRGMPTFPWD EDPEEDGSPD PEPSPPEPK PSLEPNTSLE REPRNSSPS PSPGQASET HPRPS
Characteristics:	Human SULT2B1 full-length ORF (NP_814444.1, 1 a.a. - 365 a.a.) recombinant protein with GST-tag at N-terminal.
Purification:	in vitro wheat germ expression system

Target Details

Target:	SULT2B1
Alternative Name:	SULT2B1 (SULT2B1 Products)
Background:	Full Gene Name: sulfotransferase family, cytosolic, 2B, member 1 Synonyms: HSST2
Gene ID:	6820
NCBI Accession:	NM_177973
Pathways:	Steroid Hormone Biosynthesis

Application Details

Application Notes:	Optimal working dilution should be determined by the investigator.
Comment:	Preparation method: in vitro, wheat germ expression system Product Quality tested by: 12.5% SDS-PAGE Stained with Coomassie Blue.
Restrictions:	For Research Use only

Handling

Buffer:	50 mM Tris-HCl, 10 mM reduced Glutathione, pH =8.0 in the elution buffer.
Handling Advice:	Aliquot to avoid repeated freezing and thawing.
Storage:	-80 °C
Storage Comment:	Best use within three months from the date of receipt of this protein.

Images

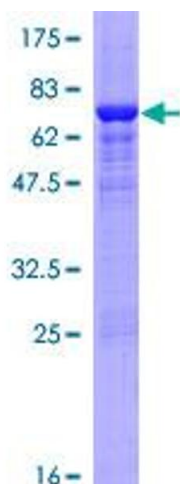


Image 1.