



[Go to Product page](#)

Datasheet for ABIN1321894
SUMO2 Protein (AA 1-95) (GST tag)

1 Image

Overview

Quantity:	10 µg
Target:	SUMO2
Protein Characteristics:	AA 1-95
Origin:	Human
Source:	Wheat germ
Protein Type:	Recombinant
Purification tag / Conjugate:	This SUMO2 protein is labelled with GST tag.
Application:	Western Blotting (WB), ELISA, Affinity Purification (AP), Antibody Array (AA)

Product Details

Purpose:	SUMO2 (Human) Recombinant Protein (P01)
Sequence:	MADEKPKEGV KTENNNHINL KVAGQDGSVV QFKIKRHTPL SKLMKAYCER QGLSMRQIRF RFDGQPINET DTPAQLEMED EDTIDVFQQQ TGGVY
Characteristics:	Human SUMO2 full-length ORF (AAH08450, 1 a.a. - 95 a.a.) recombinant protein with GST-tag at N-terminal.
Purification:	in vitro wheat germ expression system

Target Details

Target:	SUMO2
Alternative Name:	SUMO2 (SUMO2 Products)

Target Details

Background:	Full Gene Name: SMT3 suppressor of mif two 3 homolog 2 (<i>S. cerevisiae</i>) Synonyms: HSMT3,MGC117191,SMT3B,SMT3H2
Gene ID:	6613
Pathways:	Methionine Biosynthetic Process

Application Details

Application Notes:	Optimal working dilution should be determined by the investigator.
Comment:	Preparation method: in vitro, wheat germ expression system Product Quality tested by: 12.5% SDS-PAGE Stained with Coomassie Blue.
Restrictions:	For Research Use only

Handling

Buffer:	50 mM Tris-HCl, 10 mM reduced Glutathione, pH =8.0 in the elution buffer.
Handling Advice:	Aliquot to avoid repeated freezing and thawing.
Storage:	-80 °C
Storage Comment:	Best use within three months from the date of receipt of this protein.

Images

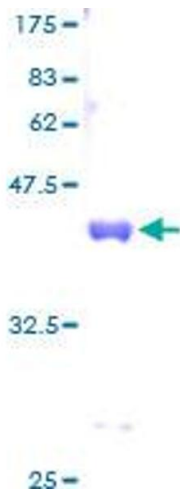


Image 1.