

Datasheet for ABIN1321906
SUPT16H Protein (AA 608-715) (GST tag)



[Go to Product page](#)

1 Image

Overview

Quantity:	10 µg
Target:	SUPT16H
Protein Characteristics:	AA 608-715
Origin:	Human
Source:	Wheat germ
Protein Type:	Recombinant
Purification tag / Conjugate:	This SUPT16H protein is labelled with GST tag.
Application:	ELISA, Western Blotting (WB), Affinity Purification (AP), Antibody Array (AA)

Product Details

Purpose:	SUPT16H (Human) Recombinant Protein (Q01)
Sequence:	PGEQTVPALN LQNAFRIIKE VQKRYKTREA EEKEKEGIVK QDSLVINLNR SNPCLKDLYI RPNIAQKRMQ GSLEAHVNGF RFTSVRGDKV DILYNNIKHA LFQPCDGE
Characteristics:	Human SUPT16H partial ORF (NP_009123, 608 a.a. - 715 a.a.) recombinant protein with GST-tag at N-terminal.
Purification:	in vitro wheat germ expression system

Target Details

Target:	SUPT16H
Alternative Name:	SUPT16H (SUPT16H Products)

Target Details

Background:	Full Gene Name: suppressor of Ty 16 homolog (<i>S. cerevisiae</i>) Synonyms: CDC68,FACT,FACTP140,FLJ10857,FLJ14010,FLJ34357,SPT16/CDC68
Gene ID:	11198
NCBI Accession:	NM_007192
Pathways:	Chromatin Binding

Application Details

Application Notes:	Optimal working dilution should be determined by the investigator.
Comment:	Preparation method: in vitro, wheat germ expression system Product Quality tested by: 12.5% SDS-PAGE Stained with Coomassie Blue.
Restrictions:	For Research Use only

Handling

Buffer:	50 mM Tris-HCl, 10 mM reduced Glutathione, pH =8.0 in the elution buffer.
Handling Advice:	Aliquot to avoid repeated freezing and thawing.
Storage:	-80 °C
Storage Comment:	Best use within three months from the date of receipt of this protein.

Images

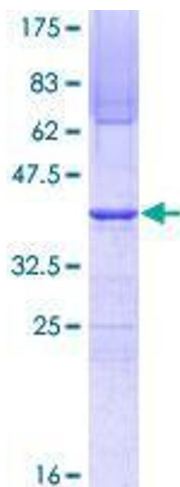


Image 1.