



[Go to Product page](#)

Datasheet for ABIN1321908

SUPT3H/SPT3 Protein (AA 1-328) (GST tag)

1 Image

Overview

Quantity:	10 µg
Target:	SUPT3H/SPT3 (SUPT3H)
Protein Characteristics:	AA 1-328
Origin:	Human
Source:	Wheat germ
Protein Type:	Recombinant
Purification tag / Conjugate:	This SUPT3H/SPT3 protein is labelled with GST tag.
Application:	ELISA, Western Blotting (WB), Affinity Purification (AP), Antibody Array (AA)

Product Details

Purpose:	SUPT3H (Human) Recombinant Protein (P01)
Sequence:	MVWFGTTFN FDSFIGKTDS IEIIGKSVFP YCYHNILPLL NDSGRYSLGD ARRPLHETAV LVEDVVHTQL INLLQQAEEV SQLRGARVIT PEDLLFLMRK DKKKLRRLLK YMFIRDYKSK IVKGIDEDDL LEDKLSGSNN ANKRQKIAQD FLNSIDQTGE LLAMFEDDEI DEVKQERMER AERQTRIMDS AQYAEFCESR QLSFSKKASK FRDWLDCSSM EIKPNVVAME ILAYLAYETV AQLVDLALLV RQDMVTKAGD PFSHAISATF IQYHNSAEST AACGVEAHS DAIQPCHIREA IRRYSHRIGP LSPFTNAYRR NGMAFLAC
Characteristics:	Human SUPT3H full-length ORF (AAH50384, 1 a.a. - 328 a.a.) recombinant protein with GST-tag at N-terminal.
Purification:	in vitro wheat germ expression system

Target Details

Target:	SUPT3H/SPT3 (SUPT3H)
Alternative Name:	SUPT3H (SUPT3H Products)
Background:	Full Gene Name: suppressor of Ty 3 homolog (S. cerevisiae) Synonyms: SPT3,SPT3L
Gene ID:	8464

Application Details

Application Notes:	Optimal working dilution should be determined by the investigator.
Comment:	Preparation method: in vitro, wheat germ expression system Product Quality tested by: 12.5% SDS-PAGE Stained with Coomassie Blue.
Restrictions:	For Research Use only

Handling

Buffer:	50 mM Tris-HCl, 10 mM reduced Glutathione, pH =8.0 in the elution buffer.
Handling Advice:	Aliquot to avoid repeated freezing and thawing.
Storage:	-80 °C
Storage Comment:	Best use within three months from the date of receipt of this protein.

Images

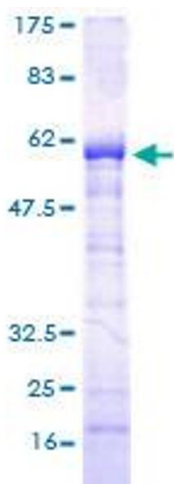


Image 1.