



[Go to Product page](#)

Datasheet for ABIN1321921

## SURF1 Protein (AA 1-300) (GST tag)

### 1 Image

#### Overview

|                               |   |
|-------------------------------|---|
| Quantity:                     | 25 µg   |
| Target:                       | SURF1   |
| Protein Characteristics:      | AA 1-300  |
| Origin:                       | Human   |
| Source:                       | Wheat germ  |
| Protein Type:                 | Recombinant   |
| Purification tag / Conjugate: | This SURF1 protein is labelled with GST tag.                                  |
| Application:                  | Western Blotting (WB), ELISA, Affinity Purification (AP), Antibody Array (AA) |

#### Product Details

|                  |  |
|------------------|--|
| Purpose:         | SURF1 (Human) Recombinant Protein (P01)  |
| Sequence:        | MAVAALQLG LRAAGLGRAP ASAAWRSVLR VSPRPGVAWR PSRCGSSAAE ASATKAEDDS<br>FLQWVLLLIP VTAFGLGTWQ VQRRKWKLNL IAELESRVLA EPVPLPADPM ELKNLEYRPV<br>KVRGCFDHSK ELYMMPRTMV DPVREAREGG LISSSTQSGA YVVTPEHCTD LGVTILVNRG<br>FVPRKKVNPE TRQKGQIEGE VDLIGMVRLT ETRQPFVPEP NPERNHWHYR DLEAMARITG<br>AEPIFIDANF QSTVPGGPIG GQTRVTLRNE HLQYIVTWYG LSAATSYLWF KKFLRGTPGV |
| Characteristics: | Human SURF1 full-length ORF ( NP_003163.1, 1 a.a. - 300 a.a.) recombinant protein with GST-tag at N-terminal.  |
| Purification:    | in vitro wheat germ expression system  |

## Target Details

|                   |  |
|-------------------|--|
| Target:           | SURF1  |
| Alternative Name: | SURF1 ( <a href="#">SURF1 Products</a> )   |
| Background:       | Full Gene Name: surf1<br>Synonyms:   |
| Gene ID:          | 6834   |
| NCBI Accession:   | <a href="#">NM_003172</a>  |
| Pathways:         | <a href="#">Proton Transport</a> , <a href="#">Ribonucleoside Biosynthetic Process</a> |

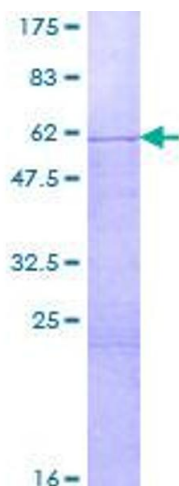
## Application Details

|                    |  |
|--------------------|--|
| Application Notes: | Optimal working dilution should be determined by the investigator.   |
| Comment:           | Preparation method: in vitro, wheat germ expression system<br>Product Quality tested by: 12.5% SDS-PAGE Stained with Coomassie Blue. |
| Restrictions:      | For Research Use only  |

## Handling

|                  |   |
|------------------|---|
| Buffer:          | 50 mM Tris-HCl, 10 mM reduced Glutathione, pH =8.0 in the elution buffer. |
| Handling Advice: | Aliquot to avoid repeated freezing and thawing.                           |
| Storage:         | -80 °C  |
| Storage Comment: | Best use within three months from the date of receipt of this protein.    |

## Images



**Image 1.**