

Datasheet for ABIN1321927
SURF6 Protein (AA 1-361) (GST tag)



[Go to Product page](#)

1 Image

Overview

Quantity:	10 µg
Target:	SURF6
Protein Characteristics:	AA 1-361
Origin:	Human
Source:	Wheat germ
Protein Type:	Recombinant
Purification tag / Conjugate:	This SURF6 protein is labelled with GST tag.
Application:	ELISA, Western Blotting (WB), Affinity Purification (AP), Antibody Array (AA)

Product Details

Purpose:	SURF6 (Human) Recombinant Protein (P01)
Sequence:	MASLLAKDAY LQSLAKKICS HSAPEQQART RAGKTQGSET AGPPKKRKK TQKKFRKREE KAAEHKAKSL GEKSPAASGA RRPEAAKEEA AWASSSAGNP ADGLATEPES VFALDVLQRQ LHEKIQEARG QGSAKELSPA ALEKRRRRKQ ERDRKKRKRK ELRAKEKARK AEEATEAQEV VEATPEGACT EPREPPGLIF NKVEVSEDEP ASKAQRRKEK RQRVKGNLTP LTGRNYRQLL ERLQARQSRL DELRGQDEGK AQELEAKMKW TNLLYKAEGV KIRDDERLLQ EALKRKEKRR AQRQRRWEKR TAGVVEKMQQ RQDRRRQNL RKKAAARAERR LLRARKKGRI LPQDLERAGL V
Characteristics:	Human SURF6 full-length ORF (NP_006744.2, 1 a.a. - 361 a.a.) recombinant protein with GST-tag at N-terminal.
Purification:	in vitro wheat germ expression system

Target Details

Target:	SURF6
Alternative Name:	SURF6 (SURF6 Products)
Background:	Full Gene Name: surfeit 6 Synonyms: FLJ30322
Gene ID:	6838
NCBI Accession:	NM_006753
Pathways:	Ribonucleoprotein Complex Subunit Organization, Ribosome Assembly

Application Details

Application Notes:	Optimal working dilution should be determined by the investigator.
Comment:	Preparation method: in vitro, wheat germ expression system Product Quality tested by: 12.5% SDS-PAGE Stained with Coomassie Blue.
Restrictions:	For Research Use only

Handling

Buffer:	50 mM Tris-HCl, 10 mM reduced Glutathione, pH =8.0 in the elution buffer.
Handling Advice:	Aliquot to avoid repeated freezing and thawing.
Storage:	-80 °C
Storage Comment:	Best use within three months from the date of receipt of this protein.

Images

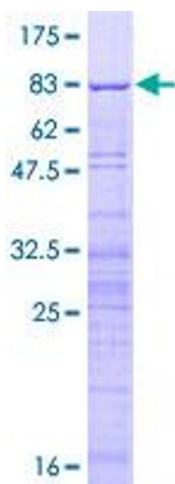


Image 1.