



[Go to Product page](#)

Datasheet for ABIN1321929

SUSD2 Protein (AA 1-822) (GST tag)

1 Image

Overview

Quantity:	10 µg
Target:	SUSD2
Protein Characteristics:	AA 1-822
Origin:	Human
Source:	Wheat germ
Protein Type:	Recombinant
Purification tag / Conjugate:	This SUSD2 protein is labelled with GST tag.
Application:	ELISA, Western Blotting (WB), Antibody Array (AA), Affinity Purification (AP)

Product Details

Purpose:	SUSD2 (Human) Recombinant Protein (P01)
Sequence:	MKPALLPWAL LLLATALGPG PGPTADAQES CSMRCGALDG PCSCHPTCSG LGTCCLDFRD FCLEILPYSG SMMGGKDFVW RHFKMSSPTD ASVICRFKDS IQTLGHVDSS GQVHCVSPLL YESGRIPFTV SLDNGHSFPR AGTWLAVHPN KVSMMEKSEL VNETRWWQYYG TANTSGNLSL TWHVKSLLPTQ TITIELWGYE ETGMPYSQEW TAKWSYLYPL ATHIPNSGSF TFTP KPAPPS YQRWRV GALR IIDSKNYAGQ KDVQALWTND HALAWHLSDD FREDPVAWAR TQCQAWEELE DQLPNFLEEL PDCPCTLTQA RADSGRFFTD YGCDMEQGSV CTYHPGAVHC VRSVQASLRY GSGQCCCYTA DGTQLLTADS SGGSTPDRGH DWGAPPFRTP PRVPSMSHWL YDVLSFYFCC LWAPDCPRYM QRRPSNDCRN YRPPRLASAF GDPHFVTFDG TNFTFNGRGE YVLLAALTD LRVQARAQPG TMSNGTETRG TGLTAVAVQE GNSDVVEVRL ANRTGGLEVL LNQEVL SFTE QSWMDLKGMF LSVAAGDRVS IMLASGAGLE VSVQGPFLSV SVLLPEKFLT HTHGLLGLTN NDPTDDFTLH SGRVLPPGTS PQELFLFGAN WTVHNASSLL TYDSWFLVHN FLYQPKHDPT

Product Details

FEPLFPSETT LNPSLAQEAA KLCGDDHFCN FDVAATGSLS TGTATRVAHQ LHQRMQSLQ
PVVSCGWLAP PPNGQKEGNR YLAGSTIYFH CDNGYSLAGA ETSTCQADGT WSSPTPKCQP
GRSYAVLLGI IFGGLAVVAA VALVYVLLRR RKGNTHWGA QP

Characteristics: Human SUSD2 full-length ORF (NP_062547.1, 1 a.a. - 822 a.a.) recombinant protein with GST-tag at N-terminal.

Purification: in vitro wheat germ expression system

Target Details

Target: SUSD2

Alternative Name: SUSD2 ([SUSD2 Products](#))

Background: Full Gene Name: sushi domain containing 2
Synonyms: BK65A6.2,FLJ22778

Gene ID: 56241

NCBI Accession: [NM_019601](#)

Application Details

Application Notes: Optimal working dilution should be determined by the investigator.

Comment: Preparation method: in vitro, wheat germ expression system
Product Quality tested by: 12.5% SDS-PAGE Stained with Coomassie Blue.

Restrictions: For Research Use only

Handling

Buffer: 50 mM Tris-HCl, 10 mM reduced Glutathione, pH =8.0 in the elution buffer.

Handling Advice: Aliquot to avoid repeated freezing and thawing.

Storage: -80 °C

Storage Comment: Best use within three months from the date of receipt of this protein.

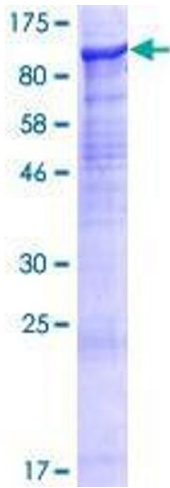


Image 1.