



[Go to Product page](#)

Datasheet for ABIN1321932
SUSD4 Protein (AA 1-290) (GST tag)

1 Image

Overview

Quantity:	10 µg
Target:	SUSD4
Protein Characteristics:	AA 1-290
Origin:	Human
Source:	Wheat germ
Protein Type:	Recombinant
Purification tag / Conjugate:	This SUSD4 protein is labelled with GST tag.
Application:	ELISA, Western Blotting (WB), Affinity Purification (AP), Antibody Array (AA)

Product Details

Purpose:	SUSD4 (Human) Recombinant Protein (P01)
Sequence:	MYHGMNPSNG DGFLEQQQQQ QQPQSPQRLL AVILWFQLAL CFGPAQLTGG FDDLQVCADP GIPENGF RTP SGGVFFEGSV ARFHCQDGFK LKGATKRLCL KHFNGTLGWI PSDNSICVQE DCRIPQIEDA EIHNKTYRHG EKLIITCHEG FKIRYPDLHN MVSLCRDDGT WNNLPICQGC LRPLASSNGY VNISELQTSF PVGTVISYRC FPGFKLDGSA YLECLQNLIW SSSPPRCLAL EGGRPEHLFP VLYFPHIRLA AAVLYFCPVL KSSPTPAPTC SSTSTTTSLF
Characteristics:	Human SUSD4 full-length ORF (NP_001032252.1, 1 a.a. - 290 a.a.) recombinant protein with GST-tag at N-terminal.
Purification:	in vitro wheat germ expression system

Target Details

Target:	SUSD4
Alternative Name:	SUSD4 (SUSD4 Products)
Background:	Full Gene Name: sushi domain containing 4 Synonyms: FLJ10052,PRO222
Gene ID:	55061
NCBI Accession:	NM_001037175

Application Details

Application Notes:	Optimal working dilution should be determined by the investigator.
Comment:	Preparation method: in vitro, wheat germ expression system Product Quality tested by: 12.5% SDS-PAGE Stained with Coomassie Blue.
Restrictions:	For Research Use only

Handling

Buffer:	50 mM Tris-HCl, 10 mM reduced Glutathione, pH =8.0 in the elution buffer.
Handling Advice:	Aliquot to avoid repeated freezing and thawing.
Storage:	-80 °C
Storage Comment:	Best use within three months from the date of receipt of this protein.

Images

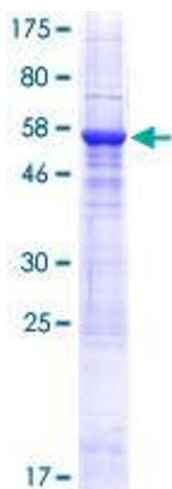


Image 1.