



Datasheet for ABIN1321934

SUSD5 Protein (AA 284-383) (GST tag)



[Go to Product page](#)

1 Image

Overview

Quantity:	10 µg
Target:	SUSD5
Protein Characteristics:	AA 284-383
Origin:	Human
Source:	Wheat germ
Protein Type:	Recombinant
Purification tag / Conjugate:	This SUSD5 protein is labelled with GST tag.
Application:	ELISA, Western Blotting (WB), Affinity Purification (AP), Antibody Array (AA)

Product Details

Purpose:	KIAA0527 (Human) Recombinant Protein (Q01)
Sequence:	TTVCSKSGSGE QQIMRAVDVR IESNPVPGGT YSALCIKDEE KPCGDPPSFP HTILQGRTGL EMGDELLYVC APGHIMGHRE TAFTLLCNSC GEWYGLVQAC
Characteristics:	Human KIAA0527 partial ORF (XP_171054, 284 a.a. - 383 a.a.) recombinant protein with GST-tag at N-terminal.
Purification:	in vitro wheat germ expression system

Target Details

Target:	SUSD5
Alternative Name:	SUSD5 (SUSD5 Products)

Target Details

Background: Full Gene Name: sushi domain containing 5
Synonyms: KIAA0527

Gene ID: 26032

NCBI Accession: [XM_171054](#)

Application Details

Application Notes: Optimal working dilution should be determined by the investigator.

Comment: Preparation method: in vitro, wheat germ expression system
Product Quality tested by: 12.5% SDS-PAGE Stained with Coomassie Blue.

Restrictions: For Research Use only

Handling

Buffer: 50 mM Tris-HCl, 10 mM reduced Glutathione, pH =8.0 in the elution buffer.

Handling Advice: Aliquot to avoid repeated freezing and thawing.

Storage: -80 °C

Storage Comment: Best use within three months from the date of receipt of this protein.

Images

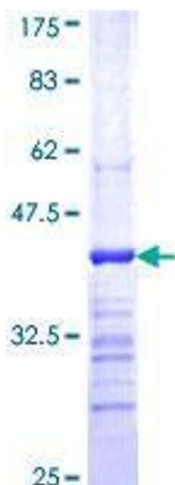


Image 1.