



Datasheet for ABIN1321940

SUV420H1 Protein (AA 1-885) (GST tag)



[Go to Product page](#)

1 Image

Overview

Quantity:	25 µg
Target:	SUV420H1
Protein Characteristics:	AA 1-885
Origin:	Human
Source:	Wheat germ
Protein Type:	Recombinant
Purification tag / Conjugate:	This SUV420H1 protein is labelled with GST tag.
Application:	ELISA, Western Blotting (WB), Affinity Purification (AP), Antibody Array (AA)

Product Details

Purpose:	SUV420H1 (Human) Recombinant Protein (P01)
Sequence:	MKWLGESKNM VVNGRRNGGK LSNDHQQNQS KLQHTGKDTL KAGKNAVERR SNRCNGNSGF EGQSRYPVSS GMSAKELCEN DDLATSLVLD PYLGFQTHKM NTSAFPSSRS RHFSKSDSFS HNNPVRFRPI KGRQEELKEV IERFKKDEHL EKAFKCLTSG EWARHYFLNK NKMQEKLKFE HVFIYLRMFA TDSGFELPC NRYSSSEQNGA KIVATKEWKR NDKIELLVGC IAELSEIEN MLLRHGENDF SVMYSTRKNC AQLWLGPAAF INHDCRPNCK FVSTGRDTAC VKALRDIEPG EEISCYYGDG FFGENNEFCE CYTCERRGTG AFKSRVGLPA PAPVINSKYG LRETDKRLNR LKKLGDSSKN SDSQSVSSNT DADTTQEKNN ATSNRKSSVG VKKNSKSRTL TRQSMSRIPA SSNSTSSKLT HINNSRVPK LKKPAKPLLS KIKLRNHCKR LEQKNASRKL EMGNLVLKEP KVVLYKNLPI KKDKEPEGPA QAAVASGCLT RHAAREHRQN PVRGAHSQGE SSPCTYITRR SVRTRTNLKE ASDIKLEPNT LNGYKSSVTE PCPDSGEQLQ PAPVLQEEEL AHETAQKGEA KCHKSDTGMS KKKSRQGKLV KQFAKIEEST PVHDSPGKDD AVPDLMGPHS DQGEHSGTVG

Product Details

VPVSYTDCAP SPVGCSVWTS DSFKTKDSFR TAKSKKKRRI TRYDAQLILE NNSGIPKLTL
RRRHDSSTKT NDQENDGMNS SKISIKLSKD HDNDNNLYVA KLNNGFNSGS GSSSTKLKIQ
LKRDEENRGS YTEGLHENGV CCSDPLSLE SRMEVDDYSQ YEEESTDDSS SSEGDEEEDD
YDDDFEDDFI PLPPAKRLRL IVGKDSIDID ISSRRREDQS LRLNA

Characteristics: Human SUV420H1 full-length ORF (NP_060105.3, 1 a.a. - 885 a.a.) recombinant protein with GST-tag at N-terminal.

Purification: in vitro wheat germ expression system

Target Details

Target: SUV420H1

Alternative Name: SUV420H1 ([SUV420H1 Products](#))

Background: Full Gene Name: suppressor of variegation 4-20 homolog 1 (Drosophila)
Synonyms: CGI-85,CGI85,KMT5B,MGC118906,MGC118909,MGC21161,MGC703

Gene ID: 51111

NCBI Accession: [NM_017635](#)

Application Details

Application Notes: Optimal working dilution should be determined by the investigator.

Comment: Preparation method: in vitro, wheat germ expression system
Product Quality tested by: 12.5% SDS-PAGE Stained with Coomassie Blue.

Restrictions: For Research Use only

Handling

Buffer: 50 mM Tris-HCl, 10 mM reduced Glutathione, pH =8.0 in the elution buffer.

Handling Advice: Aliquot to avoid repeated freezing and thawing.

Storage: -80 °C

Storage Comment: Best use within three months from the date of receipt of this protein.

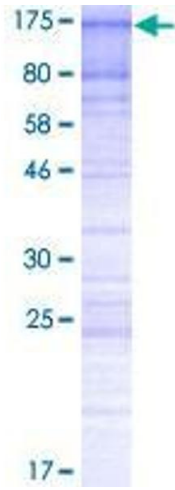


Image 1.