



[Go to Product page](#)

Datasheet for ABIN1321947

SV2B Protein (AA 417-476) (GST tag)

1 Image

Overview

Quantity:	10 µg
Target:	SV2B
Protein Characteristics:	AA 417-476
Origin:	Human
Source:	Wheat germ
Protein Type:	Recombinant
Purification tag / Conjugate:	This SV2B protein is labelled with GST tag.
Application:	ELISA, Western Blotting (WB), Affinity Purification (AP), Antibody Array (AA)

Product Details

Purpose:	SV2B (Human) Recombinant Protein (Q01)
Sequence:	YFQDEEYKSK MKVFFGEHVY GATINFTMEN QIQHQGKLVN DKFTRMYFKH VLFEDTFFDE
Characteristics:	Human SV2B partial ORF (NP_055663, 417 a.a. - 476 a.a.) recombinant protein with GST-tag at N-terminal.
Purification:	in vitro wheat germ expression system

Target Details

Target:	SV2B
Alternative Name:	SV2B (SV2B Products)
Background:	Full Gene Name: synaptic vesicle glycoprotein 2B

Target Details

Synonyms: HsT19680,KIAA0735

Gene ID: 9899

NCBI Accession: [NM_014848](#)

Application Details

Application Notes: Optimal working dilution should be determined by the investigator.

Comment: Preparation method: in vitro, wheat germ expression system
Product Quality tested by: 12.5% SDS-PAGE Stained with Coomassie Blue.

Restrictions: For Research Use only

Handling

Buffer: 50 mM Tris-HCl, 10 mM reduced Glutathione, pH =8.0 in the elution buffer.

Handling Advice: Aliquot to avoid repeated freezing and thawing.

Storage: -80 °C

Storage Comment: Best use within three months from the date of receipt of this protein.

Images

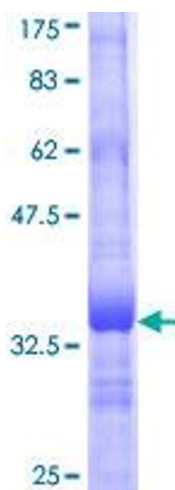


Image 1.