

Datasheet for ABIN1321967
SYDE1 Protein (AA 1-668) (GST tag)



[Go to Product page](#)

1 Image

Overview

Quantity:	25 µg
Target:	SYDE1
Protein Characteristics:	AA 1-668
Origin:	Human
Source:	Wheat germ
Protein Type:	Recombinant
Purification tag / Conjugate:	This SYDE1 protein is labelled with GST tag.
Application:	Western Blotting (WB), ELISA, Affinity Purification (AP), Antibody Array (AA)

Product Details

Purpose:	SYDE1 (Human) Recombinant Protein (P01)
Sequence:	<p>MAEPLLRKTF SRLRGREKLP RKKSDAKERG PGVPGTGEP A GEIWYNPIPE EDPRPPAPEP PGQPQGS AES EGLAPQGAAP ASPPTKASRT KSPGPARRLS IKMKKLP ELR RRLSLRG PRA GRERERAAPA GSVISRYHLD SSVGGPGPAA GPGGTRSPRA GYLSGDGSPE RPAGPPSPTS FRPYEVGPAA RAPP AALWGR LSLHLYGLGG LRPAPGATPR DLCCLLQVDG EARARTGPLR GGPDFLRLDH TFHLELEAAR LLRALVLAWD PGVRRHRPCA QGTVLLPTVF RGCQAQQLAV RLEPQGLLYA KLTLSEQQEA PATAEPRVFG LPLPLLVERE RPPGQVPLII QKCVGQIERR GLRVVGLYRL CGSAAVKKEL RDAFERDSAA VCLSEDLYPD INVITGILKD YLRELPTPLI TQPLYKVVLE AMARDPPNRV PPTTEGTRGL LSCLPDVERA TLTL LLDHLR LVSSFHAYNR MTPQNLA VCF GPVLLPARQA PTRPRARSSG PGLASAVDFK HHIEVLHYLL QSWPDPRLPR QSPDVAPYLR PKRQPPLHLP LADPEVVTRP RGRGGPESPP SNRYAGDWSV CGRDFLPCGR DFLSGPDYDH VTGSDSEDED EEVGEP RV TG DFEDDFDAPF NPHLNLKDFD ALILD LEREL</p>

Product Details

SKQINVCL

Characteristics:	Human SYDE1 full-length ORF (AAH29926.1, 1 a.a. - 668 a.a.) recombinant protein with GST-tag at N-terminal.
Purification:	in vitro wheat germ expression system

Target Details

Target:	SYDE1
Alternative Name:	SYDE1 (SYDE1 Products)
Background:	Full Gene Name: synapse defective 1, Rho GTPase, homolog 1 (C. elegans) Synonyms: 7h3,FLJ13511
Gene ID:	85360

Application Details

Application Notes:	Optimal working dilution should be determined by the investigator.
Comment:	Preparation method: in vitro, wheat germ expression system Product Quality tested by: 12.5% SDS-PAGE Stained with Coomassie Blue.
Restrictions:	For Research Use only

Handling

Buffer:	50 mM Tris-HCl, 10 mM reduced Glutathione, pH =8.0 in the elution buffer.
Handling Advice:	Aliquot to avoid repeated freezing and thawing.
Storage:	-80 °C
Storage Comment:	Best use within three months from the date of receipt of this protein.

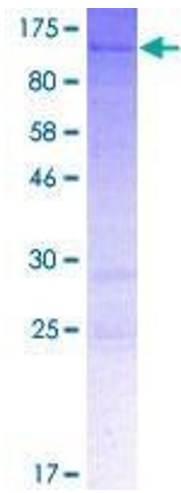


Image 1.