



[Go to Product page](#)

Datasheet for ABIN1321972
SYK Protein (AA 243-340) (GST tag)

1 Image

Overview

Quantity:	10 µg
Target:	SYK
Protein Characteristics:	AA 243-340
Origin:	Human
Source:	Wheat germ
Protein Type:	Recombinant
Purification tag / Conjugate:	This SYK protein is labelled with GST tag.
Application:	Western Blotting (WB), ELISA, Affinity Purification (AP), Antibody Array (AA)

Product Details

Purpose:	SYK (Human) Recombinant Protein (Q01)
Sequence:	HYSYKADGLL RVLTVPCQKI GTQGNVNFEGG RPQLPGSHPA TWSAGGIISR IKSYSFPPKPG HRKSSPAQGN RQESTVSFNP YEP LAPWAA DKGPQREA
Characteristics:	Human SYK partial ORF (AAH01645, 243 a.a. - 340 a.a.) recombinant protein with GST-tag at N-terminal.
Purification:	in vitro wheat germ expression system

Target Details

Target:	SYK
Alternative Name:	SYK (SYK Products)

Target Details

Background:	Full Gene Name: spleen tyrosine kinase Synonyms: DKFZp313N1010,FLJ25043,FLJ37489
Gene ID:	6850
Pathways:	Fc-epsilon Receptor Signaling Pathway , Regulation of Leukocyte Mediated Immunity , Positive Regulation of Immune Effector Process , Thromboxane A2 Receptor Signaling , BCR Signaling

Application Details

Application Notes:	Optimal working dilution should be determined by the investigator.
Comment:	Preparation method: in vitro, wheat germ expression system Product Quality tested by: 12.5% SDS-PAGE Stained with Coomassie Blue.
Restrictions:	For Research Use only

Handling

Buffer:	50 mM Tris-HCl, 10 mM reduced Glutathione, pH =8.0 in the elution buffer.
Handling Advice:	Aliquot to avoid repeated freezing and thawing.
Storage:	-80 °C
Storage Comment:	Best use within three months from the date of receipt of this protein.

Images

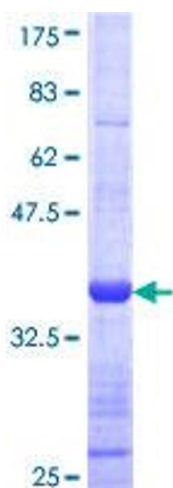


Image 1.