

Datasheet for ABIN1321980

Synapsin III Protein (SYN3) (AA 1-580) (GST tag)



[Go to Product page](#)

1 Image

Overview

Quantity:	10 µg
Target:	Synapsin III (SYN3)
Protein Characteristics:	AA 1-580
Origin:	Human
Source:	Wheat germ
Protein Type:	Recombinant
Purification tag / Conjugate:	This Synapsin III protein is labelled with GST tag.
Application:	ELISA, Western Blotting (WB), Affinity Purification (AP), Antibody Array (AA)

Product Details

Purpose:	SYN3 (Human) Recombinant Protein (P01)
Sequence:	MNFLRRRLSD SSFMANLPNG YMTDLQRPDS STSSPASPAM ERRHPQPLAA SFSSPGSSLF SSLSSAMKQA PQATSGLMPEP PGPSTPIVQR PRILLVIDDA HTDWSKYFHG KKVNGEIEIR VEQAEFSELN LAAYVTGGCM VDMQVVRNGT KVVSRSEFKPD FILVRQHAYS MALGEDYRSL VIGLQYGGLP AVNSLYSVYN FCSKPWFVSQ LIKIFHSLGP EKFPLEQTF FPNHKPMVTA PHFPVVVKLG HAHAGMGKIK VENQLDFQDI TSVVAMAKTY ATTEAFIDSK YDIRIQKIGS NYKAYMRTSI SGNWKANTGS AMLEQVAMTE RYRLWVDCS EMFGGLDICA VKAVHSDKGR DYIIEVMDSS MPLIGEHVEE DRQLMADLVV SKMSQLPMPG GTAPSPLRPW APQIKSAKSP GQAQLGPQLG QPQPRPPPQG GPRQAQSPQP QRSGSPSQQR LSPQGQQLS PQSGSPQQQR SPGSPQLSRA SSGSSPNQAS KPGATLASQP RPPVQGRSTS QQGEESKKPA PPHPHLNKSQ SLTNSLSTSD TSQRGTPSED EAKAETIRNL RKSFASLFSD
Characteristics:	Human SYN3 full-length ORF (AAH75065.1, 1 a.a. - 580 a.a.) recombinant protein with GST-tag

Product Details

at N-terminal.

Purification: in vitro wheat germ expression system

Target Details

Target: Synapsin III (SYN3)

Alternative Name: SYN3 ([SYN3 Products](#))

Background: Full Gene Name: synapsin III
Synonyms:

Gene ID: 8224

Application Details

Application Notes: Optimal working dilution should be determined by the investigator.

Comment: Preparation method: in vitro, wheat germ expression system
Product Quality tested by: 12.5% SDS-PAGE Stained with Coomassie Blue.

Restrictions: For Research Use only

Handling

Buffer: 50 mM Tris-HCl, 10 mM reduced Glutathione, pH =8.0 in the elution buffer.

Handling Advice: Aliquot to avoid repeated freezing and thawing.

Storage: -80 °C

Storage Comment: Best use within three months from the date of receipt of this protein.

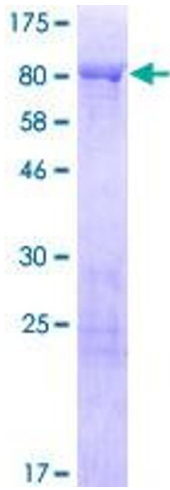


Image 1.