



[Go to Product page](#)

Datasheet for ABIN1321987

SYNE2 Protein (AA 6702-6799) (GST tag)

1 Image

Overview

Quantity:	10 µg
Target:	SYNE2
Protein Characteristics:	AA 6702-6799
Origin:	Human
Source:	Wheat germ
Protein Type:	Recombinant
Purification tag / Conjugate:	This SYNE2 protein is labelled with GST tag.
Application:	Western Blotting (WB), Affinity Purification (AP), Antibody Array (AA), ELISA

Product Details

Purpose:	SYNE2 (Human) Recombinant Protein (Q01)
Sequence:	CRRELMQLEK ELVERQPQVD MLQEISNSLL IKGHGEDCIE AEEKVHVIEK KLKQLREQVS QDLMALQGTQ NPASPLPSFD EVDSGDQPPA TSVAPAPRA
Characteristics:	Human SYNE2 partial ORF (NP_055995, 6702 a.a. - 6799 a.a.) recombinant protein with GST-tag at N-terminal.
Purification:	in vitro wheat germ expression system

Target Details

Target:	SYNE2
Alternative Name:	SYNE2 (SYNE2 Products)
Name:	

Target Details

Background: Full Gene Name: spectrin repeat containing, nuclear envelope 2

Synonyms:

DKFZp434H2235,DKFZp686E01115,DKFZp686H1931,FLJ11014,FLJ43727,FLJ45710,FLJ46790,KIAA1011,NUA,NUANCE,
2,SYNE-2

Gene ID: 23224

NCBI [NM_015180](#)

Accession:

Pathways: [Maintenance of Protein Location](#)

Application Details

Application Notes: Optimal working dilution should be determined by the investigator.

Comment: Preparation method: in vitro, wheat germ expression system
Product Quality tested by: 12.5% SDS-PAGE Stained with Coomassie Blue.

Restrictions: For Research Use only

Handling

Buffer: 50 mM Tris-HCl, 10 mM reduced Glutathione, pH =8.0 in the elution buffer.

Handling Advice: Aliquot to avoid repeated freezing and thawing.

Storage: -80 °C

Storage Comment: Best use within three months from the date of receipt of this protein.

Images

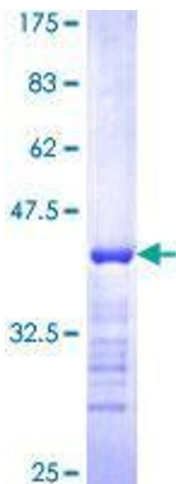


Image 1.