

Datasheet for ABIN1322023
SYT7 Protein (AA 41-139) (GST tag)



[Go to Product page](#)

1 Image

Overview

Quantity:	10 µg
Target:	SYT7
Protein Characteristics:	AA 41-139
Origin:	Human
Source:	Wheat germ
Protein Type:	Recombinant
Purification tag / Conjugate:	This SYT7 protein is labelled with GST tag.
Application:	ELISA, Western Blotting (WB), Affinity Purification (AP), Antibody Array (AA)

Product Details

Purpose:	SYT7 (Human) Recombinant Protein (Q01)
Sequence:	CQRKLGKRYK NSLETVGTPD SGRGRSEKKA IKLPAGGKAV NTAPVPGQTP HDESDRRTEP RSSVSDLVNS LTSEMLMLSP GSEEDAHEG CSRENLGRI
Characteristics:	Human SYT7 partial ORF (NP_004191.2, 41 a.a. - 139 a.a.) recombinant protein with GST-tag at N-terminal.
Purification:	in vitro wheat germ expression system

Target Details

Target:	SYT7
Alternative Name:	SYT7 (SYT7 Products)

Target Details

Background:	Full Gene Name: synaptotagmin VII Synonyms: IPCA-7,MGC150517,PCANAP7,SYT-VII
Gene ID:	9066
NCBI Accession:	NM_004200
Pathways:	Synaptic Vesicle Exocytosis

Application Details

Application Notes:	Optimal working dilution should be determined by the investigator.
Comment:	Preparation method: in vitro, wheat germ expression system Product Quality tested by: 12.5% SDS-PAGE Stained with Coomassie Blue.
Restrictions:	For Research Use only

Handling

Buffer:	50 mM Tris-HCl, 10 mM reduced Glutathione, pH =8.0 in the elution buffer.
Handling Advice:	Aliquot to avoid repeated freezing and thawing.
Storage:	-80 °C
Storage Comment:	Best use within three months from the date of receipt of this protein.

Images

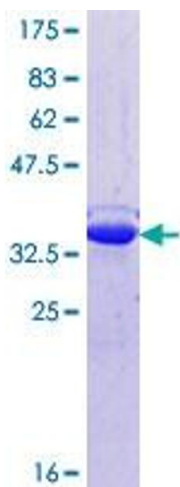


Image 1.