



[Go to Product page](#)

Datasheet for ABIN1322028

SYVN1 Protein (AA 238-318) (GST tag)

1 Image

Overview

Quantity:	10 µg
Target:	SYVN1
Protein Characteristics:	AA 238-318
Origin:	Human
Source:	Wheat germ
Protein Type:	Recombinant
Purification tag / Conjugate:	This SYVN1 protein is labelled with GST tag.
Application:	ELISA, Western Blotting (WB), Affinity Purification (AP), Antibody Array (AA)

Product Details

Purpose:	SYVN1 (Human) Recombinant Protein (Q01)
Sequence:	HTFPLFAIRP MYLAMRQFKK AVTDAIMSRR AIRNMNTLYP DATPEELQAM DNVCIICREE MVTGAKRLPC NHIFHTSCLR S
Characteristics:	Human SYVN1 partial ORF (NP_079434, 238 a.a. - 318 a.a.) recombinant protein with GST-tag at N-terminal.
Purification:	in vitro wheat germ expression system

Target Details

Target:	SYVN1
Alternative Name:	SYVN1 (SYVN1 Products)

Target Details

Background: Full Gene Name: synovial apoptosis inhibitor 1, synoviolin
Synonyms: HRD1,KIAA1810,MGC40372

Gene ID: 84447

NCBI Accession: [NM_032431](#)

Pathways: [ER-Nucleus Signaling](#), [Negative Regulation of intrinsic apoptotic Signaling](#)

Application Details

Application Notes: Optimal working dilution should be determined by the investigator.

Comment: Preparation method: in vitro, wheat germ expression system
Product Quality tested by: 12.5% SDS-PAGE Stained with Coomassie Blue.

Restrictions: For Research Use only

Handling

Buffer: 50 mM Tris-HCl, 10 mM reduced Glutathione, pH =8.0 in the elution buffer.

Handling Advice: Aliquot to avoid repeated freezing and thawing.

Storage: -80 °C

Storage Comment: Best use within three months from the date of receipt of this protein.

Images

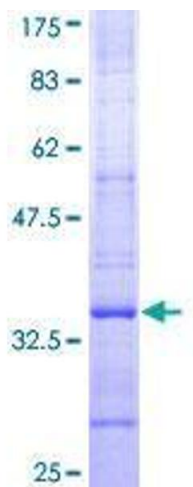


Image 1.