



[Go to Product page](#)

Datasheet for ABIN1322037

TAAR6 Protein (AA 1-345) (GST tag)

1 Image

Overview

Quantity:	25 µg
Target:	TAAR6
Protein Characteristics:	AA 1-345
Origin:	Human
Source:	Wheat germ
Protein Type:	Recombinant
Purification tag / Conjugate:	This TAAR6 protein is labelled with GST tag.
Application:	ELISA, Western Blotting (WB), Affinity Purification (AP), Antibody Array (AA)

Product Details

Purpose:	TAAR6 (Human) Recombinant Protein (P01)
Sequence:	MSSNSSLLVA VQLCYANVNG SCVKIPFSPG SRVILYIVFG FGAVLAVFGN LLVMISILHF KQLHSPTNFL VASLACADFL VGVTVMPSM VRTVESCWYF GRSFCTFHTC CDVAFCYSSL FHLCFISIDR YIAVTDPLVY PTKFTVSVSG ICISVSWILP LMYSGAVFYT GUYDDGLEEL SDALNCIGGC QTVVNQNWVL TDFLSFFIPT FIMIILYGNL FLVARRQAKK IENTGSKTES SSESYKARVA RRERKAAKTL GVTVAFMIS WLPYSIDSLI DAFMGFITPA CIYEICCWCA YYNSAMNPLI YALFYPWFRK AIKVIVTGQV LKNSSATMNL FSEHI
Characteristics:	Human TAAR6 full-length ORF (NP_778237.1, 1 a.a. - 345 a.a.) recombinant protein with GST-tag at N-terminal.
Purification:	in vitro wheat germ expression system

Target Details

Target:	TAAR6
Alternative Name:	TAAR6 (TAAR6 Products)
Background:	Full Gene Name: trace amine associated receptor 6 Synonyms: RP11-295F4.3,SCZD5,TA4,TRAR4
Gene ID:	319100
NCBI Accession:	NM_175067

Application Details

Application Notes:	Optimal working dilution should be determined by the investigator.
Comment:	Preparation method: in vitro, wheat germ expression system Product Quality tested by: 12.5% SDS-PAGE Stained with Coomassie Blue.
Restrictions:	For Research Use only

Handling

Buffer:	50 mM Tris-HCl, 10 mM reduced Glutathione, pH =8.0 in the elution buffer.
Handling Advice:	Aliquot to avoid repeated freezing and thawing.
Storage:	-80 °C
Storage Comment:	Best use within three months from the date of receipt of this protein.

Images

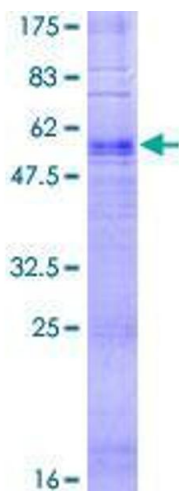


Image 1.