



[Go to Product page](#)

Datasheet for ABIN1322046

TACR1 Protein (AA 1-311) (GST tag)

1 Image

Overview

Quantity:	25 µg
Target:	TACR1
Protein Characteristics:	AA 1-311
Origin:	Human
Source:	Wheat germ
Protein Type:	Recombinant
Purification tag / Conjugate:	This TACR1 protein is labelled with GST tag.
Application:	Western Blotting (WB), ELISA, Affinity Purification (AP), Antibody Array (AA)

Product Details

Purpose:	TACR1 (Human) Recombinant Protein (P01)
Sequence:	MDNVLPVDS D LSPNISTNTS EPNQFVQPAW QIVLWAAAYT VIVVTSVWGN VVVMWILAH KRMRTVTNYF LVNLAFAEAS MAAFNTVVNF TYAVHNEWYY GLFYCKFHNF FPIAAVFASI YSMTAVAFDR YMAIHPLQP RLSATATKVV ICVIWVLALL LAFPQGYST TETMPSRVVC MIEWPEHPNK IYEKVVHICV TVLIYFLPLL VIGYAYTVVG ITLWASEIPG DSSDRYHEQV SAKRKVVKMM IVVVCTFAIC WLPFHIFLL PYINPDLYLK KFIQQVYLAI MWLAMSSTMY NPIIYCCLND R
Characteristics:	Human TACR1 full-length ORF (NP_056542.1, 1 a.a. - 311 a.a.) recombinant protein with GST-tag at N-terminal.
Purification:	in vitro wheat germ expression system

Target Details

Target:	TACR1
Alternative Name:	TACR1 (TACR1 Products)
Background:	Full Gene Name: tachykinin receptor 1 Synonyms: NK1R,NKIR,SPR,TAC1R
Gene ID:	6869
NCBI Accession:	NM_015727
Pathways:	Regulation of Systemic Arterial Blood Pressure by Hormones , Feeding Behaviour , Smooth Muscle Cell Migration

Application Details

Application Notes:	Optimal working dilution should be determined by the investigator.
Comment:	Preparation method: in vitro, wheat germ expression system Product Quality tested by: 12.5% SDS-PAGE Stained with Coomassie Blue.
Restrictions:	For Research Use only

Handling

Buffer:	50 mM Tris-HCl, 10 mM reduced Glutathione, pH =8.0 in the elution buffer.
Handling Advice:	Aliquot to avoid repeated freezing and thawing.
Storage:	-80 °C
Storage Comment:	Best use within three months from the date of receipt of this protein.

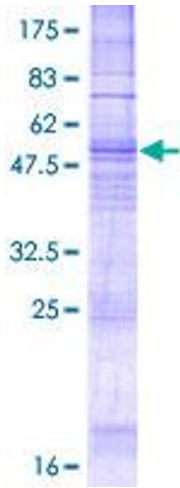


Image 1.