



[Go to Product page](#)

Datasheet for ABIN1322070

TAF11 Protein (AA 1-211) (GST tag)

1 Image

Overview

| | |
|-------------------------------|---|
| Quantity: | 10 µg |
| Target: | TAF11 |
| Protein Characteristics: | AA 1-211 |
| Origin: | Human |
| Source: | Wheat germ |
| Protein Type: | Recombinant |
| Purification tag / Conjugate: | This TAF11 protein is labelled with GST tag. |
| Application: | ELISA, Western Blotting (WB), Affinity Purification (AP), Antibody Array (AA) |

Product Details

| | |
|------------------|---|
| Purpose: | TAF11 (Human) Recombinant Protein (P01) |
| Sequence: | MDDAHESPSD KGGETGESDE TAAVPGDPGA TDTDGIP EET DGDADVDLKE AAAEEGELES QDVSDLTTVE REDSSLLNPA AKKLIKIDTKE KKEKKQKVDE DEIQKMQLV SSFSEEQLNR YEMYRRSAFP KAAIKRLIQS ITGTSVSQNV VIAMSGISKV FVGEVVEEAL DVCEKWGEMP PLQPKHMREA VRRLLKSKGQI PNSKHKKIIF F |
| Characteristics: | Human TAF11 full-length ORF (NP_005634.1, 1 a.a. - 211 a.a.) recombinant protein with GST-tag at N-terminal. |
| Purification: | in vitro wheat germ expression system |

Target Details

| | |
|---------|-------|
| Target: | TAF11 |
|---------|-------|

Target Details

| | |
|-------------------|--|
| Alternative Name: | TAF11 (TAF11 Products) |
| Background: | Full Gene Name: TAF11 RNA polymerase II, TATA box binding protein (TBP)-associated factor, 28 kDa Synonyms: MGC:15243,PRO2134,TAF2I,TAFII28 |
| Gene ID: | 6882 |
| NCBI Accession: | NM_005643 |

Application Details

| | |
|--------------------|--|
| Application Notes: | Optimal working dilution should be determined by the investigator. |
| Comment: | Preparation method: in vitro, wheat germ expression system Product Quality tested by: 12.5% SDS-PAGE Stained with Coomassie Blue. |
| Restrictions: | For Research Use only |

Handling

| | |
|------------------|---|
| Buffer: | 50 mM Tris-HCl, 10 mM reduced Glutathione, pH =8.0 in the elution buffer. |
| Handling Advice: | Aliquot to avoid repeated freezing and thawing. |
| Storage: | -80 °C |
| Storage Comment: | Best use within three months from the date of receipt of this protein. |

Images

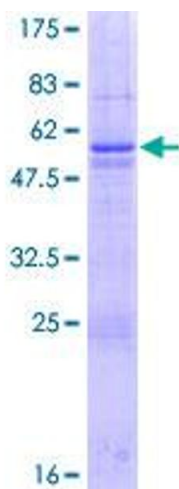


Image 1.