



[Go to Product page](#)

Datasheet for ABIN1322074

TAF12 Protein (AA 1-161) (GST tag)

1 Image

Overview

Quantity:	10 µg
Target:	TAF12
Protein Characteristics:	AA 1-161
Origin:	Human
Source:	Wheat germ
Protein Type:	Recombinant
Purification tag / Conjugate:	This TAF12 protein is labelled with GST tag.
Application:	Western Blotting (WB), ELISA, Affinity Purification (AP), Antibody Array (AA)

Product Details

Purpose:	TAF12 (Human) Recombinant Protein (P01)
Sequence:	MNQFGPSALI NLSNFSSIKP EPASTPPQGS MANSTAVVKI PGTPGAGGRL SPENNQVLTK KKLQDLVREV DPNEQLDEDV EEMLLQIADD FIESVVTAAAC QLARHRKSST LEVKDVQLHL ERQWNMWIPG FGSEEIRPYK KACTTEAHKQ RMALIRKTTK K
Characteristics:	Human TAF12 full-length ORF (AAH11986, 1 a.a. - 161 a.a.) recombinant protein with GST-tag at N-terminal.
Purification:	in vitro wheat germ expression system

Target Details

Target:	TAF12
Alternative Name:	TAF12 (TAF12 Products)

Target Details

Background:	Full Gene Name: TAF12 RNA polymerase II, TATA box binding protein (TBP)-associated factor, 20 kDa Synonyms: TAF2J,TAFII20
Gene ID:	6883

Application Details

Application Notes:	Optimal working dilution should be determined by the investigator.
Comment:	Preparation method: in vitro, wheat germ expression system Product Quality tested by: 12.5% SDS-PAGE Stained with Coomassie Blue.
Restrictions:	For Research Use only

Handling

Buffer:	50 mM Tris-HCl, 10 mM reduced Glutathione, pH =8.0 in the elution buffer.
Handling Advice:	Aliquot to avoid repeated freezing and thawing.
Storage:	-80 °C
Storage Comment:	Best use within three months from the date of receipt of this protein.

Images

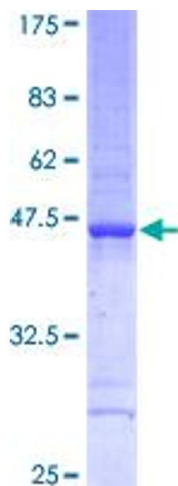


Image 1.